

# RAPIDCUE BATCH REFERENCE GUIDE

### DOCUMENT REVISIONS

DATE	VERSION NUMBER	AUTHOR	DOCUMENT CHANGES
08/06/2018	0.01	Cheryl Christner, Renée Odom	Initial Draft
3/15/2019	1.0	Cheryl Christner	First Release
5/28/2019	1.01	Cheryl Christner	Updated ACK message for Series205, Program208, Program102, and Cue200 Removed Cue104 Added Program124
6/6/2019	1.02	Cheryl Christner	Added Character Encoding section and an Appendix for Accepted UTF-8 Character
6/10/2019	1.03	Cheryl Christner, Renée Odom	Added database save ACK messages
6/13/2019	1.4.1	Cheryl Christner, Renée Odom	Updated process flow image Updated A.14 with new XSD v1.4.1
7/30/2019	1.4.2	Cheryl Christner, Renée Odom	Added SeriesAka203, Program210, Program211, Program212, ProgramAka203, Actor204, Director204, Organization204, and InterestedParty205 Updated Cue208
8/28/2019	1.4.3	Cheryl Christner, Renée Odom	Updated ACK messages to use consistent language. Removed Cue208, and InterestedParty205
10/2/2019	1.4.4	Cheryl Christner, Renée Odom	Updated ACK messages for Cue111 and InterestedParty106
04/08/2020	1.4.5	Cheryl Christner, Renée Odom	Updated logo Updated Appendix A.13 tables
03/31/2021	1.4.6	Cheryl Christner, Renée Odom	Updated language for InterestedParty204 Updated language for Program200 Updated language for InterestedParty203 Updated length of Interested Party CompanyName Updated length of Organization CompanyName Updated XSD Added new society and country Added File200 Error
1/3/2022	1.4.7	Cheryl Christner, Renée Odom	Added new fields: SeriesNumber, Network, Season, CueSubUsage, VisualSourceIndicator, SyncUseIndicator, SyncUseLicensor, MasterUseIndicator, and MasterUseLicensor Updated Appendix numbers Updated XSD to version 1.4.3 Added new warnings: Cue112, Cue113, Cue114, Cue115. Added new Societies to appendix A.12 Updated XSDReject messages
1/12/2024	1.4.8	Cheryl Christner, Renée Odom	Add new optional Ids: GracenoteTMSId, GracenoteConnectorId, EIDR, ISNI Updated XSD to version 1.4.4 New filename length validation
01/13/2025	1.4.9	Cheryl Christner, Renée Odom	Add new optional field: ShareScale Update validation Cue105 Change length of Program Name, Program Previous Name, and Program Aka Name to 150 Updated XSD to version 1.4.5

## TABLE OF CONTENTS

Document Revisions .....	2
1 Introduction.....	6
1.1 Scope and Purpose.....	6
1.2 Process Overview .....	7
1.3 Character Encoding.....	9
1.4 Data Types.....	9
1.5 Field status.....	10
2 XML Schema.....	11
2.1 Musiccue .....	11
2.2 Creator.....	13
2.3 Series .....	14
2.3.1 Series AKA.....	15
2.4 Program.....	15
2.4.1 Program AKA .....	17
2.4.2 Actor .....	18
2.4.3 Director .....	18
2.4.4 Organization .....	19
2.4.5 Cue .....	19
2.4.6 Interested Party.....	21
3 No Music Cues .....	23
4 Validation Rules .....	24
4.1 XSD .....	24
4.2 File .....	24
4.3 Musiccue .....	24
4.4 Creator.....	26
4.5 Series .....	27
4.5.1 Series AKA.....	28
4.6 Program.....	29
4.6.1 Program AKA .....	32
4.6.2 Actor .....	33
4.6.3 Director .....	34
4.6.4 Organization .....	34

4.6.5	Cue .....	35
4.6.5.1	Interested Party .....	37
5	Acknowledgements .....	39
5.1	Acknowledgement Types .....	39
5.2	Record Status Format .....	39
5.2.1	File Acknowledgement Format .....	39
5.2.2	MusicCue Status Format .....	40
5.2.3	Creator Status Format .....	40
5.2.4	Series Status Format .....	41
5.2.5	Program Status Format .....	41
5.3	Validation Message Format .....	42
5.3.1	Creator .....	42
5.3.2	Series .....	42
5.3.2.1	Series Aka .....	42
5.3.3	Program Record .....	43
5.3.3.1	Program Aka Record .....	43
5.3.3.2	Actor Record .....	43
5.3.3.3	Director Record .....	44
5.3.3.4	Organization Record .....	44
5.3.3.5	Cue Record .....	44
5.3.3.6	Interested Party Record .....	45
A	Appendices .....	46
A.1	Action Codes .....	46
A.2	Country/TIS Number .....	46
A.3	Creator Type .....	49
A.4	Cue Sheet Type .....	49
A.5	Cue Usage .....	49
A.6	Cue SUBUsage .....	49
A.7	Interested Party (IP) Roles .....	50
A.8	Language .....	50
A.9	Program Category .....	51
A.10	Sender Types .....	51
A.11	Series Category .....	51
A.12	Society .....	51
A.13	Version .....	53

A.14	Accepted UTF-8 Characters.....	53
A.14.1	Basic Latin.....	53
A.14.2	Latin-1 Supplement .....	55
A.15	XML Schema (XSD) .....	57
6	Index.....	66

## 1 INTRODUCTION

Welcome to RapidCue!

RapidCue is a system that allows the electronic submission of cue sheets to designated Performing Rights Organizations (PROs). RapidCue includes:

- a database that stores interested parties, music works and cue sheets
- a web-based application for creating, revising and submitting cue sheets
- a Batch service

RapidCue users have two distinct avenues for cue sheet submission: through the Web application or the Batch service. This document is intended to be a user guide for those who want to submit cue sheets through the Batch process. We hope you find it helpful and informative. If you don't find what you need to know in this document or if you simply have a question, you can contact RapidCue representatives at BMI and ASCAP at the following email address: [info@rapidcue.com](mailto:info@rapidcue.com)

Thank you for choosing RapidCue!

The RapidCue Team

### 1.1 SCOPE AND PURPOSE

A Cue sheet lists all the music used within a single audio-visual production. An individual piece of music within a Cue sheet is referred to as a "Cue". A "Cue" includes the title and interested parties of the music as well as the timing and usage for that individual piece of music within the specified audio-visual production.

This document describes the RapidCue Batch service. It includes:

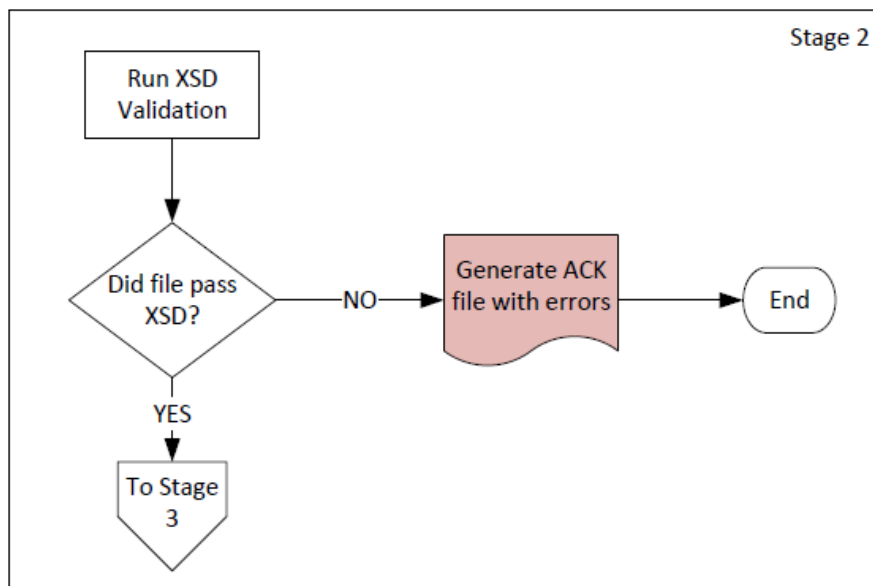
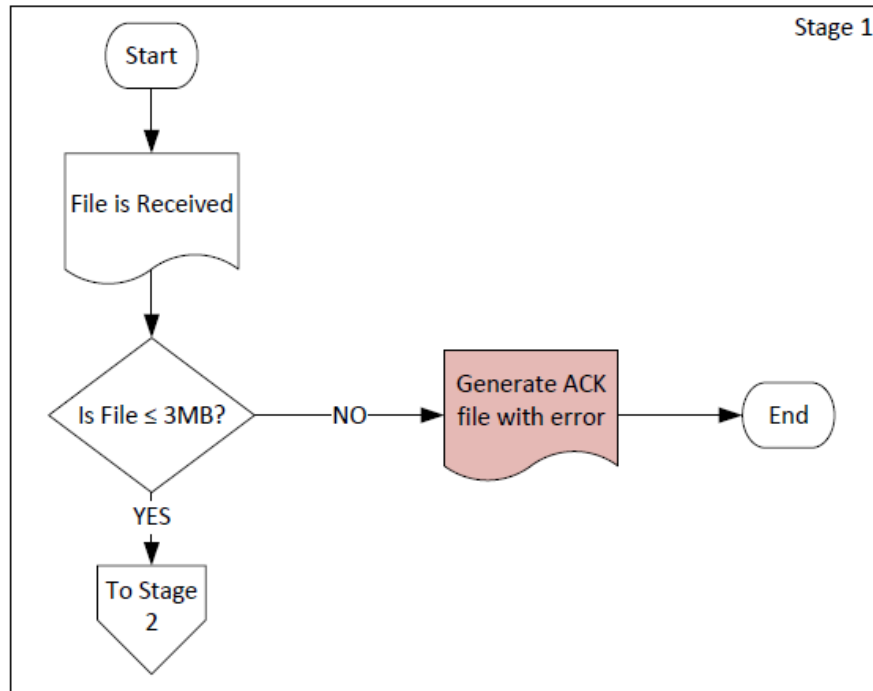
- The RapidCue XML schema (XSD). Current schema is 1.4.5
- Information about the structure of the XML schema and field definitions
- Validation rules
- Error codes
- Information about the acknowledgement file

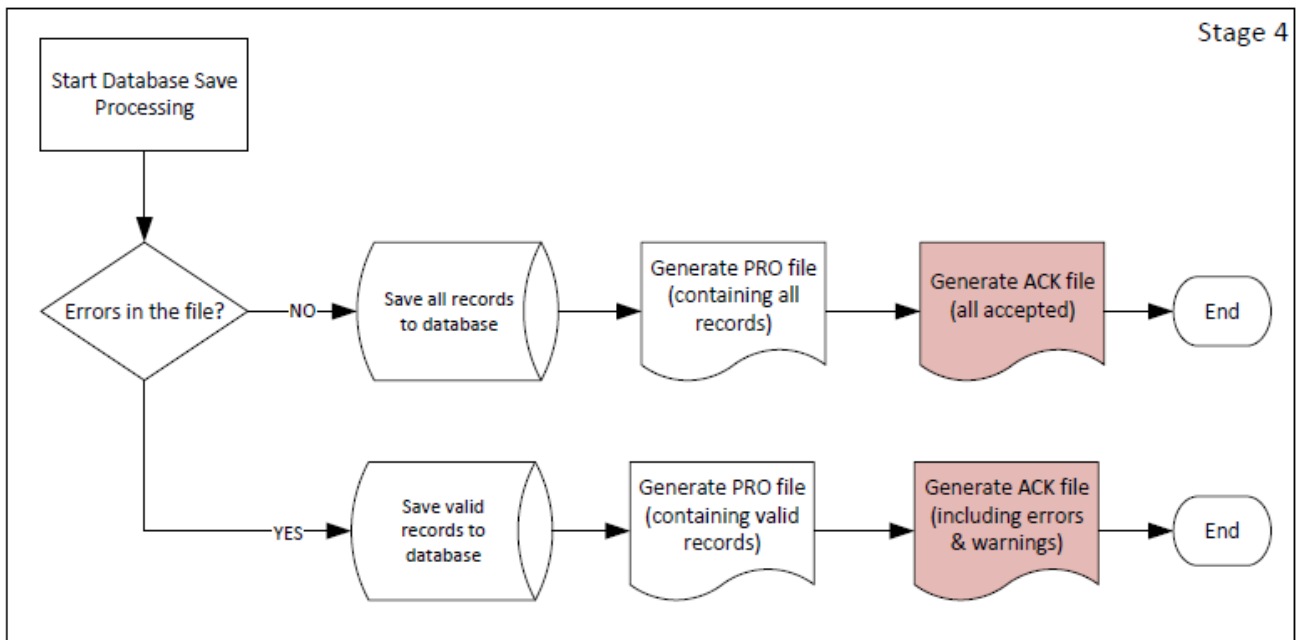
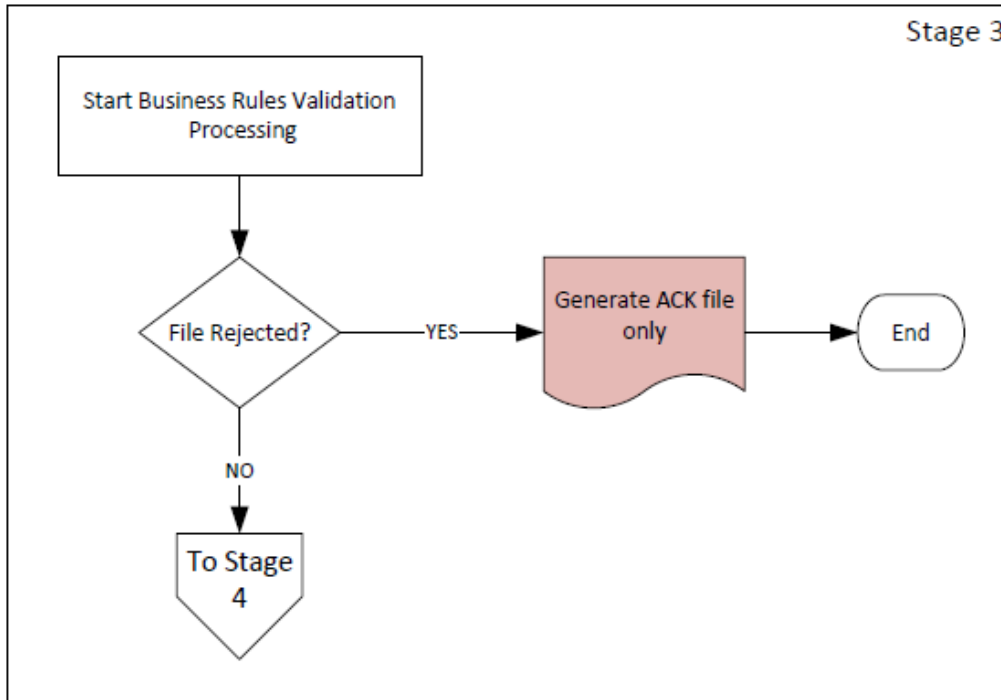
The purpose of the RapidCue Batch service is to provide a service for Cue sheet providers to submit Cue Sheets to all Performing Rights Organizations (PROs) that are associated with RapidCue. Cue Sheet providers can utilize the RapidCue XML schema to submit data to a pre-defined sFTP site from their proprietary systems to RapidCue and the associated PROs.

The RapidCue Batch service, as defined in this document, seeks to enable more accurate receipt and tracking of Cue sheet submissions to ensure that all Cue sheets are delivered to the PROs efficiently and with data integrity.

## 1.2 PROCESS OVERVIEW

The diagrams below provide a high-level view of the RapidCue Batch process flow.







### 1.3 CHARACTER ENCODING

RapidCue accepts the following UTF-8 character sets (See Appendix A.14 for a list of accepted characters):

- Basic Latin (not control characters)
- Latin-1 Supplement (not control characters)

There are five characters that must be escaped to have a well-formed XML document. These are:

Characters To Escape	Escaped Value
& (Ampersand)	&amp;
< (Less than)	&lt;
> (Greater than)	&gt;
" (Quote)	&quot;
' (Apostrophe)	&apos;

Failure to use the acceptable character sets or escape the characters above, will result in the entire file being rejected.

### 1.4 DATA TYPES

The following data types are used in the Batch XML.

Data type	Constraints
Alphanumeric	Any string containing valid text. Note that all alphabetic characters must be in uppercase. If there is no data to be entered in an alphabetic field, leave the field blank (""). The default value of all Alphanumeric fields is blank.
Boolean	Field must be equal to 'Yes' or 'No'. The default value is 'No'.
Date	Dates are numeric and formatted as YYYYMMDD. If there is no data to be entered in a date field, leave the field blank.
Numeric	Default is a single zero.
Time or Duration	Time/Duration fields are numeric and formatted as HHMMSS. Time of day is to be expressed in 24-hour format. If there is no data to be entered in a time/duration field, leave the field blank.

## 1.5 FIELD STATUS

Every field in the XML Schema will have one of the following field statuses:

Field Status	Description
Required	<p>This field must be provided. If the field is not provided, the record will be rejected and, depending on the record type, the entire transaction may be rejected.</p> <p><b>Note:</b></p> <ul style="list-style-type: none"><li>• Not all attributes are required.</li><li>• All elements within an attribute are required to be present when the attribute is present. However, only required elements must have values.</li></ul>
Conditional	<p>This field may be required depending on other conditions that exist in either the current record or the transaction. If the condition results in a required field, this record will be rejected, and depending on the record type, the element or entire file may be rejected.</p>
Optional	<p>The attribute must be present in the file but does not require a value.</p>

## 2 XML SCHEMA

XSD (XML Schema Definition) specifies how to formally describe the elements in an Extensible Markup Language (XML) document. This description is used to verify that each item of content in a document adheres to the description of the element in which the content is to be placed.

The current schema is v1.4.5. See Appendix A.15 for the XSD. A file copy of the XSD should have been provided along with this document. The current XSD can always be downloaded from <https://www.rapidcue.com/batch.htm>.

Please note that all XML attributes and elements are required to be present. However, an empty string can be the value for any given attribute/element if a value is not required.

Submission file names should be 150 characters or less.

### 2.1 MUSICCUE

This is the root element. This element encapsulates all records and contains the Submitter information. There can be only one MusicCue element per file and it is required.

Field	Format	Max size	Usage	Description
SenderID	Numeric	9	Required	A unique, pre-assigned number that identifies the submitter
SenderName	Alphanumeric	65	Required	The name of the submitter. The Sender could be a publisher, PRO, production company, production distributor or other agency. This information could be useful in identifying who to contact if questions exist about the submission.
SenderType	Alphanumeric	255	Optional	Must be a valid Sender Type. See Appendix A.10 for a list of valid values.
CompanyID	Alphanumeric	9	Optional	A unique identifier that further defines information about the submitter(s). The Company could be a department, subsidiary or client of the Sender.
CompanyName	Alphanumeric	65	Optional	The name of the company. This information could be useful in identifying who to contact if questions exist about the submission.
ContactName	Alphanumeric	65	Optional	The name of the person that should be contacted regarding any questions about this file submission.
VersionNumber	Alphanumeric	5	Required	Indicates which version of the standard was used to create the data in this file. This field must be set to 01.00 for this version of the standard.

Field	Format	Max size	Usage	Description
CreationDate	Date	8	Required	The date this file was created in the format: YYYYMMDD.
CreationTime	Time	6	Required	The time of day this file was created in the format: HHMMSS.
TransmissionDate	Date	8	Required	The date that this file was transmitted in the format: YYYYMMDD.
TransmissionTime	Time	6	Required	The time that this file was transmitted in the format: HHMMSS.
BatchRequest	Numeric	10	Optional	A unique number managed by the submitter to identify this submission.
SubmissionSource	Alphanumeric	32	Optional	Submitter's software or product used to create this format.
SubmissionVersion	Alphanumeric	11	Optional	Version number for source software or product used to create this format.
TransmissionProtocol	Alphanumeric	8	Optional	Information about the software used to transfer the file.
Addressee	Alphanumeric	65	Optional	Name of the individual or group that should receive correspondence about this submission.
Building	Alphanumeric	65	Optional	Mailing address information.
Street	Alphanumeric	65	Optional	Mailing address information.
Town	Alphanumeric	65	Optional	Mailing address information.
Village	Alphanumeric	65	Optional	Mailing address information.
County	Alphanumeric	65	Optional	Mailing address information.
CountryName	Alphanumeric	40	Optional	Must be a valid Country Name. See Appendix A.2 for a list of valid values.
PostalCode	Alphanumeric	10	Optional	When provided, must include at least 5 characters.
Telephone	Alphanumeric	16	Optional	Sender's phone number for any inquiries about this transmission in the format: 999(999)999-9999. When provided, must include at least the area code and phone number.
Fax	Alphanumeric	16	Optional	Sender's fax number for any inquiries about this transmission in the format: 999(999)999-9999. When provided, must include at least the area code and phone number.
Email	Alphanumeric	255	Optional	Sender's email account for any inquiries about this transmission. This must be a valid email address. Invalid email addresses will be set to the default of a blank string.

Field	Format	Max size	Usage	Description
Website	Alphanumeric	60	Optional	Sender's company website. This must be a valid web URL. Invalid web addresses will be set to the default of a blank string.

## 2.2 CREATOR

This element contains information about the entity that created the Cue Sheet. Each file must include at least one Creator element. This element can occur more than once in a file.

Field	Format	Max size	Usage	Description
CreatorID	Numeric	9	Required	This number identifies who created this set of cue sheets. It can be different from the Sender Id.
CreatorType	Alphanumeric	255	Optional	Must be a valid Creator Type. See Appendix A.3 for a list of valid values.
ProductionCompanyName	Alphanumeric	65	Required	Identifies the Company that created this Cue sheet.
ContactName	Alphanumeric	65	Optional	The name of the person that should be contacted regarding any questions about the Cue sheet.
Addressee	Alphanumeric	65	Optional	Mailing information for the Cue sheet creator.
Building	Alphanumeric	65	Optional	Mailing information for the Cue sheet creator.
Street	Alphanumeric	65	Optional	Mailing information for the Cue sheet creator.
Town	Alphanumeric	65	Optional	Mailing information for the Cue sheet creator.
Village	Alphanumeric	65	Optional	Mailing information for the Cue sheet creator.
County	Alphanumeric	65	Optional	Mailing Information for the Cue sheet creator.
CountryName	Alphanumeric	40	Optional	Must be a valid Country Name. See Appendix A.2 for a list of valid values.
PostalCode	Alphanumeric	10	Optional	When provided, must include at least 5 characters.
Telephone	Alphanumeric	16	Optional	Creator's phone number for any inquiries about this transmission in the format: 999(999)999-9999. When provided, must include at least the area code and phone number.

Field	Format	Max size	Usage	Description
Fax	Alphanumeric	16	Optional	Creator's fax number for any inquiries about this transmission in the format: 999(999)999-9999. When provided, must include at least the area code and phone number.
Email	Alphanumeric	255	Optional	Creator's email account for any inquiries about this transmission. This must be a valid email address. Invalid email addresses will be set to the default of a blank string.
Website	Alphanumeric	60	Optional	Creator's company website. This must be a valid web URL. Invalid web addresses will be set to the default of a blank string.
ShareScale	Numeric	3	Optional	Creator's Interested Party Share Scale. The value must be 100 or 200.

### 2.3 SERIES

A Series is a connected set of audio-visual program episodes that run under the same name. In television, a Series can run for just one season or can span many seasons. A single program within a Series is called an Episode.

The Series element is optional and can occur multiple times in the submission file. This section is only included when the file contains a Cue Sheet that is an Episode. This element contains information about the Series.

Field	Format	Max size	Usage	Description
Action	Alphanumeric	6	Required	Must be a valid Action Code. See Appendix A.1 for a list of valid values.
Name	Alphanumeric	65	Required	Name of the Series.
PreviousName	Alphanumeric	65	Optional	Previous name of the Series if the name has changed.
Language	Alphanumeric	255	Optional	Must be a valid Language. See Appendix A.8 for a list of valid values.
SubmitterNumber	Alphanumeric	16	Required	Number assigned to the series by the submitter. This number must be unique for the submitter. Note that this number cannot change.
SeriesNumber	Alphanumeric	12	Optional	Additional identifier for the series. Can be the same as the SubmitterNumber. Note that this number cannot change.
SeriesCategory	Alphanumeric	255	Optional	Must be a valid Series Category. See Appendix A.11 for a list of valid values.
SeriesVersion	Alphanumeric	255	Optional	Must be a valid Series Version. See Appendix A.13 for a list of valid values.
Duration	Time	6	Optional	The normal run-time of the series in the format: HHMMSS.

Field	Format	Max size	Usage	Description
CreatorID	Numeric	9	Required	This number identifies the creator of this set of cue sheets.

### 2.3.1 SERIES AKA

This element is optional and can occur multiple times in the submission file. SeriesAka is only included when the file contains a Series and that Series has an alternate name(s).

Field	Format	Max size	Usage	Description
Action	Alphanumeric	6	Required	Must be a valid Action Code. See Appendix A.1 for a list of valid values.
Name	Alphanumeric	65	Required	Alternate name for the same series.
Language	Alphanumeric	255	Optional	Must be a valid Language. See Appendix A.8 for a list of valid values.
SubmitterNumber	Alphanumeric	16	Required	Number assigned to the series by the submitter. This number must be unique for the submitter. Note that this number cannot change.
SeriesVersion	Alphanumeric	255	Optional	Must be a valid Series Version. See Appendix A.13 for a list of valid values.

### 2.4 PROGRAM

A Program is an audio-visual production intended for broadcast over-the-air or via satellite, cable or internet. A Program can be a production that stands-alone, a Non-series program, or part of a periodically recurring Series. A cue sheet is a metadata file that documents all music used in a specific Program regardless of whether the Program is an episode of a Series or is a Non-series production.

This section contains the information about the Program. This section must occur one or more times in the file.

Field	Format	Max size	Usage	Description
Action	Alphanumeric	6	Required	Must be a valid Action Code. See Appendix A.1 for a list of valid values. If a program is being deleted, all cues, interested parties, actors, and program akas will be automatically deleted for that program.
Name	Alphanumeric	150	Required	Name of the program.
CueSheetType	Numeric	1	Required	This field defines if the program is an original or a repeat cue sheet. Must be a valid Cue Sheet Type. See Appendix A.4 for a list of valid values.
MasterNumber	Alphanumeric	16	Conditional	This number will link related cue sheets together.

Field	Format	Max size	Usage	Description
ProgramVersion	Alphanumeric	255	Optional	The version codes represent the type of broadcast sources for which the Cue sheet was created. Must be a valid Program Version Value. See Appendix A.13 for a list of valid values.
Language	Alphanumeric	255	Optional	Must be a valid Language. See Appendix A.8 for a list of valid values.
ProgramCategory	Alphanumeric	255	Optional	Must be a valid Program Category. See Appendix A.9 for a list of valid values.
ProductionYear	Numeric	4	Optional	The year the program went into production in the format: YYYY
SubmitterNumber	Alphanumeric	16	Required	Number assigned to the Program by the submitter. This number must be unique for the submitter. Note that this number cannot change.
Duration	Time	6	Required	Normal run time for this program in the format: HHMMSS
TotalMusicDuration	Time	6	Required	Total elapsed time for the music included in this program in the format: HHMMSS
AirDate	Date	8	Conditional	The original or first-time air-date for the program in the format: YYYYMMDD. This field is required if Production Number and Episode Number are empty.
ProductionNumber	Alphanumeric	12	Conditional	Required if Air Date and Episode Number are empty.
EpisodeNumber	Alphanumeric	12	Conditional	Required if Air Date and Production Number are empty.
SyndicatedNumber	Alphanumeric	10	Optional	Id number for the Program assigned by the Syndicator.
PartNumber	Numeric	2	Optional	This number represents Programs that air in Parts 1 and 2, etc. This number must be Arabic Numerals not Roman Numerals or letters.
Network	Alphanumeric	65	Optional	The source airing the program.
PreviousName	Alphanumeric	150	Conditional	This will list the previous program name if the name has changed.
AnimationIndicator	Boolean	3	Required	Represents cartoons and other animated programs. Valid values are 'Yes' or 'No'. The default value is 'No'.
RuntimeDuration	Time	6	Optional	Actual run time of the program, not including commercials in the format: HHMMSS



Field	Format	Max size	Usage	Description
MasterCueSheetIndicator	Boolean	3	Required	A Cue sheet which contains the detail that applies to numerous episodes within a series. Valid values are 'Yes' or 'No'. The default value is 'No'.
MasterFromDate	Date	8	Conditional	Sets the beginning date for the master Cue sheet, in the format: YYYYMMDD. Required if the Master Cue Sheet Indicator is set to 'Yes'.
MasterToDate	Date	8	Conditional	Sets the ending date for the master Cue sheet, in the format YYYYMMDD. Required if the Master Cue Sheet Indicator is set to 'Yes'.
MusicContentIndicator	Alphanumeric	3	Optional	Indicates whether the Cue sheet contains music. Valid values are 'Yes' or 'No'. The default value is 'Yes'.
ISAN	Numeric	14	Optional	International Standard Audio/Visual Number. Will default to zeroes until the ISAN system is available and numbers are assigned.
SeriesName	Alphanumeric	65	Conditional	When the Program is an episode of a Series, this is the name the associated Series.
SeriesSubmitterNumber	Alphanumeric	16	Conditional	When the Program is an episode of a Series, this is a unique number the Submitter assigns to that Series. Note that this number cannot change.
Season	Alphanumeric	65	Optional	A set or sequence of episodes within a specified series.
GracenoteTMSId	Alphanumeric	16	Optional	Gracenote's unique identifier for the Gracenote program record.
GracenoteConnectorId	Alphanumeric	16	Optional	Gracenote's unique identifier that connects the program record to either its parent record or another Gracenote data record.
EIDR	Alphanumeric	50	Optional	Global unique identifier for audio visual objects.
CreatorID	Numeric	9	Required	This number identifies the creator of this cue sheet.

#### 2.4.1 PROGRAM AKA

This element is optional and can occur multiple times in the Program. The ProgramAka is only included when a Program has alternate name(s).

Field	Format	Max size	Usage	Description
Action	Alphanumeric	6	Required	Must be a valid Action Code. See Appendix A.1 for a list of valid values.
Name	Alphanumeric	150	Required	Alternate name for the associated Program.
Language	Alphanumeric	255	Optional	Must be a valid Language. See Appendix A.8 for a list of valid values.
SubmitterNumber	Alphanumeric	16	Required	Number assigned to the program by the submitter. This number must be unique for the submitter. Note that this number cannot change.
ProgramVersion	Alphanumeric	255	Optional	Must be a valid Program Version. See Appendix A.13 for a list of valid values.

### 2.4.2 ACTOR

This element is optional and can occur multiple times in the Program. Actor will contain information about the Actor(s) in the Program.

Field	Format	Max size	Usage	Description
Action	Alphanumeric	6	Required	Must be a valid Action Code. See Appendix A.1 for a list of valid values.
LastName	Alphanumeric	65	Required	Actor's last name.
FirstName	Alphanumeric	65	Optional	Actor's first name.
MiddleName	Alphanumeric	65	Optional	Actor's middle name.
Role	Alphanumeric	65	Required	Valid roles are: 'Actor' or 'Actor/Director'
SubmitterNumber	Alphanumeric	16	Required	Number assigned to the Actor by the submitter. This number must be unique for the submitter. Note that this number cannot change.

### 2.4.3 DIRECTOR

This element is optional and can occur multiple times in the Program. Director will contain information about the Director(s) of the Program.

Field	Format	Max size	Usage	Description
Action	Alphanumeric	6	Required	Must be a valid Action Code. See Appendix A.1 for a list of valid values.
LastName	Alphanumeric	65	Required	Director's last name.
FirstName	Alphanumeric	65	Optional	Director's first name.
MiddleName	Alphanumeric	65	Optional	Director's middle name.
Role	Alphanumeric	65	Required	Valid roles are: 'Director' or 'Actor/Director'.

Field	Format	Max size	Usage	Description
SubmitterNumber	Alphanumeric	16	Required	Number assigned to the Director by the submitter. This number must be unique for the submitter. Note that this number cannot change.

#### 2.4.4 ORGANIZATION

This element is optional and can occur multiple times in the Program. Organization contains information about the production company and/or distribution company associated with the Program.

Field	Format	Max size	Usage	Description
Action	Alphanumeric	6	Required	Must be a valid Action Code. See Appendix A.1 for a list of valid values.
CompanyName	Alphanumeric	200	Required	Name of a production Company or distribution Company associated with the Program.
Role	Alphanumeric	65	Required	Valid roles are: 'Distributor' or 'Producer'.
SubmitterNumber	Alphanumeric	16	Required	Number assigned to the Organization by the submitter. This number must be unique for the submitter. Note that this number cannot change.

#### 2.4.5 CUE

This element is required and can occur multiple times in a Program. A Cue is a musical composition that is used in the Program and that usage is reported via a cue sheet. Each Cue contains information identifying the piece of music used in the Program and how it was used in the Program, e.g. title, interested parties, usage and duration.

Field	Format	Max size	Usage	Description
Action	Alphanumeric	6	Required	Must be a valid Action Code. See Appendix A.1 for a list of valid values. If a cue is being deleted, all interested parties in that cue will be automatically deleted.
SequenceNumber	Numeric	4	Required	A unique number assigned to the Cues on this program. The cue sequence does not necessarily represent the order of the cues. It represents a unique number/ placeholder for that cue. Cues will not be re-sequenced on revisions. Any additional cues will be added to the end.
Name	Alphanumeric	65	Required	Title of the musical composition

Field	Format	Max size	Usage	Description
ISWC	Alphanumeric	11	Optional	The International Standard Work Code assigned to this work. This number is assigned by an international agency when certain identification criteria have been met. It is a number that uniquely identifies the work in any database and territory.
SubmitterNumber	Alphanumeric	16	Required	Number assigned to the Work by the submitter. This number must be unique for the submitter. Note that this number cannot change.
CueUsage	Alphanumeric	255	Required	Must be a valid Cue Usage. See Appendix A.5 for a list of valid values.
CueSubUsage	Alphanumeric	255	Optional	Must be a valid Cue Sub Usage. See Appendix A.6 for a list of valid values.
Duration	Time	6	Required	Timing of the music on each Cue in the Format: HHMMSS
Performer	Alphanumeric	65	Optional	Name of the artist on the Work.
ProductionOrigin	Alphanumeric	65	Optional	Production where the Cue first appeared.
LibraryName	Alphanumeric	65	Optional	If the work is a library work, specify the library name.
CDNumber	Alphanumeric	9	Optional	If the work is a library work, enter the identifier associated with the CD in which the work appears.
CutNumber	Numeric	3	Optional	If this is a library work, enter the track number on the CD in which the work appears.
VisualSourceIndicator	Alphanumeric	3	Optional	Indicates whether the Cue contains a Visual Source. Valid values are 'Yes' or 'No'. The default value is 'No'.
PublicDomainIndicator	Alphanumeric	65	Required	Indicates whether the Cue contains Public Domain music. Valid values are 'Yes' or 'No'. The default value is 'No'.
PublicDomainTerritory	Alphanumeric	24	Conditional	Valid values are: 'World' or 'US'. Field is required if PublicDomainIndicator = 'Yes'. Must be blank if the PublicDomainIndicator = 'No'.
SyncUseIndicator	Alphanumeric	3	Optional	Indicates whether the Cue contains Sync Use Licensed music. Valid values are 'Yes' or 'No'. The default value is 'No'.
SyncUseLicensor	Alphanumeric	65	Optional	Licensor who holds the Sync Use License for the Cue.

Field	Format	Max size	Usage	Description
MasterUseIndicator	Alphanumeric	3	Optional	Indicates whether the Cue contains Master Use Licensed music. Valid values are 'Yes' or 'No'. The default value is 'No'.
MasterUseLicensor	Alphanumeric	65	Optional	Licensor who holds the Master Use License for the Cue.

## 2.4.6 INTERESTED PARTY

This element is required and can occur multiple times in a Cue. The Interested Party contains information about the writers and publishers of the work used as a Cue in the Program.

Field	Format	Max size	Usage	Description
Action	Alphanumeric	6	Required	Must be a valid Action Code. See Appendix A.1 for a list of valid values. If a cue is being deleted, all interested parties in that cue will be automatically deleted.
LastName	Alphanumeric	65	Conditional	Last Name of the Interested Party. This field is required if the Interested Party is a Writer.
FirstName	Alphanumeric	65	Conditional	First Name of the Interested Party.
MiddleName	Alphanumeric	65	Conditional	Middle Name of the Interested Party.
CompanyName	Alphanumeric	200	Conditional	Company Name of the Interested Party. This field is required if the Interested Party is a Publisher.
Role	Alphanumeric	255	Required	Must be a valid Role. See Appendix A.7 for a list of valid values.
NameNumber	Alphanumeric	11	Optional	This field holds the IPI Name Number for the Interested Party.
SocialSecurityNumber	Numeric	9	Optional	This field holds the Social Security Number of the Interested Party.
SubmitterNumber	Alphanumeric	16	Required	Number assigned to the Interested Party by the submitter. This number must be unique for the submitter. Note that this number cannot change.
Shares	Numeric	5	Optional	Share value must include leading zeroes for anything less than 100%. For example: 100% = 10000, 50% = 05000 and 33.33% = 03333. The provided value was left padded with 0's (zeros).

Field	Format	Max size	Usage	Description
SocietyName	Alphanumeric	255	Optional	Must be a valid Society Name. See Appendix A.12 for a list of valid Societies. If the Interested Party is not affiliated, enter 'Not Affiliated'. If the Interested Party's affiliation is unknown, enter 'Unknown'.
BaseNumber	Alphanumeric	13	Optional	This field holds the number assigned to the Interested Party in the IPI database administered by SUISA.
TISNumber	Alphanumeric	4	Optional	Must be a valid TIS Number according to the CISAC Territory Standard. See Appendix A.2 for a list of valid values.
ISNI	Alphanumeric	20	Optional	Global identifier for uniquely identifying the contributors to creative works.

**3 NO MUSIC CUES**

Cue sheets that contain 'no music' can be submitted via XML. The Excel batch format does not support 'no music' cue sheets. To submit a cue sheet that has no music submit a Cue record, Interested Party writer record, and an Interested Party publisher record.

Below is XML that can be copied and used in submissions to RapidCue Batch :

```
<Cue Action="Add" SequenceNumber="1" Name="No Music Used" ISWC="" SubmitterNumber="RBSoooo"
CueUsage="BACKGROUND INSTRUMENTAL" Duration="000001" Performer="" ProductionOrigin=""
LibraryName="" CDNumber="" CutNumber="" PublicDomainIndicator="No" PublicDomainTerritory="">
  <InterestedParty Action="Add" LastName="Unknown" FirstName="Writer" MiddleName=""
  CompanyName="" Role="Composer" NameNumber="" SocialSecurityNumber="" SubmitterNumber="
  RBSoooo" Shares="00000" SocietyName="Unknown" TISNumber="" />
  <InterestedParty Action="Add" LastName="" FirstName="" MiddleName="" CompanyName="Unknown
  Publisher" Role="Original Publisher" NameNumber="" SocialSecurityNumber="" SubmitterNumber="
  RBSoooo" Shares="00000" SocietyName="Unknown" BaseNumber="" TISNumber="" />
</Cue>
```

## 4 VALIDATION RULES

Validation rules verify that the data submitted meets the specified standards necessary to save the data to the RapidCue database and ensure ingestion by the PROs. The Validation Rules listed below are intended to maintain the quality and integrity of the data submitted via the Batch service and stored in the RapidCue database. When a file or record fails one or more Validations, a message is written to the Acknowledgement file for the Validation(s) that failed (see Descriptions listed in the Validation tables below).

### 4.1 XSD

The following validation rules run at the XSD stage and apply to all record types:

Number	Source	Type	Description
XSDReject	All	Reject File	Line-9, Column-9: The '#FieldName#' attribute is invalid - The value '9999' is invalid according to its datatype 'xxxx' - The actual length is greater than the MaxLength value.
XSDReject	All	Reject File	Line-9, Column-9: The '#FieldName#' attribute is invalid - The value 'abc123' is invalid according to its datatype 'xxxx' - The Pattern constraint failed.
XSDReject	All	Reject File	Line-9, Column-9: The '#FieldName#' attribute is invalid - The value 'Abcd' is invalid according to its datatype 'String3' - The actual length is greater than the MaxLength value.

### 4.2 FILE

Below are possible file errors that can be reported.

Number	Source	Type	Description
File200	All	Reject File	Error generating PRO file.

### 4.3 MUSICCUE

Below are the validations performed on the MusicCue record.

Number	Source	Type	Description
XSDReject	MusicCue	Reject File	Line-9, Column-9: The 'ContactName' attribute is invalid - The value 'registration opens and continental breakfast welcome opening and remarks and the top performer competition' is invalid according to its datatype 'String65' - The actual length is greater than the MaxLength value.
XSDReject	MusicCue	Reject File	The file could not be read. The entire file was rejected.



Number	Source	Type	Description
XSDReject	MusicCue	Reject File	Entire file was rejected because the file size exceeds 3 MB.
XSDReject	MusicCue	Reject File	Entire file was rejected because the file name is greater than 150 characters.
XSDReject	MusicCue	Reject File	Line-9, Column-9: The 'SenderID' attribute is invalid - The value 'ID' is invalid according to its datatype 'Integer9' - The Pattern constraint failed.
XSDReject	MusicCue	Reject File	Line-9, Column-9: The 'SenderName' attribute is invalid - The value 'tortilla strips fresh guacamole and fire roasted salsa with tortilla chips mini smoked ancho chicken tacos veggie field of greens mini salad bar classic burger bar grilled thai chicken' is invalid according to its datatype 'String65Required' - The actual length is greater than the MaxLength value.
XSDReject	MusicCue	Reject File	Line-3, Column-27" The 'VersionNumber' attribute is invalid – The value '01.55' is invalid according to its datatype 'VersionNumberValues' – The enumeration constraint failed.
MusicCue200	MusicCue	Reject File	#FileName# was previously submitted – each submission must have a unique filename. The entire file was rejected.
MusicCue201	MusicCue	Reject File	CompanyName does not match the name associated with the given CompanyID. The entire file was rejected.
MusicCue202	MusicCue	Reject File	SenderID is an invalid value or blank. Validate your Sender Id or contact RapidCue at <a href="mailto:info@rapidcue.com">info@rapidcue.com</a> . The entire file was rejected.
MusicCue203	MusicCue	Reject File	SenderName does not match the name associated with the given SenderID. The entire file was rejected.
MusicCue204	MusicCue	Reject File	All records were rejected.
MusicCue100	MusicCue	Warning	CountryName is not a valid value. Refer to the Batch Reference Guide for valid values. The default value of 'Not used' was used.
MusicCue101	MusicCue	Warning	CreationDate must be a valid date. The default value of the current date was used.
MusicCue102	MusicCue	Warning	CreationTime is not a valid time. The default value of the current time was used.
MusicCue103	MusicCue	Warning	Fax is not a valid value. The default value of a blank string was used.
MusicCue104	MusicCue	Warning	Telephone is not a valid value. The default value of a blank string was used.
MusicCue105	MusicCue	Warning	TransmissionDate is not a valid date. The default value of the current date was used.

Number	Source	Type	Description
MusicCue106	MusicCue	Warning	TransmissionTime is not a valid time. The default value of the current time was used.
MusicCue107	MusicCue	Warning	Website is not a valid web address. The default value of a blank string was used.
MusicCue108	MusicCue	Warning	Email is not a valid email address. The default value of a blank string was used.
MusicCue109	MusicCue	Warning	Postal Code does not contain at least 5 characters. The default value of a blank string was used.
MusicCue110	MusicCue	Warning	SenderType is not a valid value. Refer to the Batch Reference Guide for valid values. The default value of a blank string was used.
MusicCue111	MusicCue	Warning	ContactName is not a valid value. The default value of a blank string was used.

#### 4.4 CREATOR

Below are the validations performed on the Creator record.

Number	Source	Type	Description
XSDReject	Creator	Reject File	Line-9, Column-9: The 'CreatorID' attribute is invalid - The value " is invalid according to its datatype 'http://www.w3.org/2001/XMLSchema:integer' - The string " is not a valid Integer value.
Creator201	Creator	Reject File	CreatorID is an invalid value or blank. Validate your CreatorID or contact RapidCue at info@rapidcue.com. The entire file was rejected.
Creator202	Creator	Reject File	ProductionCompanyName does not match the name associated with the given CreatorID. The entire file was rejected.
Creator203	Creator	Reject File	All records associated with this Creator record were rejected.
Creator100	Creator	Warning	CountryName is not a valid value. Refer to the Batch Reference Guide for valid values. The default value of 'Not used' was used.
Creator101	Creator	Warning	Fax is not a valid value. The default value of a blank string was used.
Creator102	Creator	Warning	Telephone is not a valid value. The default value of a blank string was used.
Creator103	Creator	Warning	Website is not a valid web address. The default of a blank string was used.
Creator104	Creator	Warning	Email is not a valid email address. The default of a blank string was used.
Creator105	Creator	Warning	Postal Code does not contain at least 5 characters. The default value of a blank string was used.

Number	Source	Type	Description
Creator106	Creator	Warning	CreatorType is not a valid value. Refer to the Batch Reference Guide for valid values. The default value of a blank string was used.
Creator107	Creator	Warning	ContactName does not match the name associated with the given CreatorID. The default value of a blank string was used.

#### 4.5 SERIES

Below are the validations performed on the Series record.

Number	Source	Type	Description
XSDReject	Series	Reject File	Line-9, Column-9: The 'CreatorID' attribute is invalid - The value " is invalid according to its datatype 'http://www.w3.org/2001/XMLSchema:integer' - The string " is not a valid Integer value.
Series200	Series	Reject Series	SeriesCategory is not a valid value. Refer to the Batch Reference Guide for valid values. The Series record and all associated CueSheets were rejected.
Series201	Series	Reject Series	CreatorID is an invalid value or blank. Validate Creator ID or contact RapidCue at info@rapidcue.com. The Series record and all associated CueSheets were rejected.
Series202	Series	Reject Series	SeriesName is required. The Series record and all associated CueSheets were rejected.
Series203	Series	Reject Series	SubmitterNumber is required. The Series record and all associated Cue Sheets were rejected.
Series204	Series	Reject Series	Series Action is 'Add' or blank and no Program record was found. At least one Program record must exist within the Series. The Series record and all associated CueSheets were rejected.
Series205	Series	Reject Series	Series is a duplicate of another Series in the submission. A Series can be represented only one time per submission. The Series records and all associated CueSheets were rejected.
Series206	Series	Reject Series	Since all Program records for this Series were rejected, the associated Series record was rejected.
Series101	Series	Warning	Language is not a valid value. Refer to the Batch Reference Guide for valid values. The default value of 'English' was used.
Series102	Series	Warning	Duration was not a valid time. The default Duration value of '000001' was used.
Series103	Series	Warning	Series Action is 'Change' and no record exists. The Action was modified to 'Add' and the Series record was added.

Number	Source	Type	Description
Series104	Series	Warning	Series Action is 'Delete'. This is an invalid Action for a Series record. The Series record was not deleted.
Series105	Series	Warning	SeriesVersion is not a valid value. Refer to the Batch Reference Guide for valid values. The default value of '(Unknown)' was used.
Series106	Series	Warning	Duration is required. The default Duration value of '000001' was used.
Series107	Series	Warning	Duration must be a value that is greater than zero. The default Duration value of '000001' was used.
Series108	Series	Warning	Series Action is 'Add' or blank and a record exists. The Action was modified to 'Change' and the Series record was updated.
Series109	Series	Warning	Series Action was not a valid value ('Add', 'Change', 'Delete' or blank). The Action was modified to 'Add' and the Series record was added.
DB200	Series	Reject Series	Series failed to save to the database. The Series, its Programs and all associated records are rejected.

#### 4.5.1 SERIES AKA

Below are the validations performed on the SeriesAka record.

Number	Source	Type	Description
SeriesAka200	SeriesAka	Reject SeriesAka	SeriesAka Name is required. The SeriesAka record was rejected.
SeriesAka201	SeriesAka	Reject SeriesAka	SubmitterNumber is required. The SeriesAka record was rejected.
SeriesAka202	SeriesAka	Reject SeriesAka	SeriesAka is a duplicate of another Series Aka in the same Series. A Series Aka can be represented only one time per Series. The duplicate Series Aka record was rejected.
SeriesAka203	SeriesAka	Reject SeriesAka	Since the Series was rejected, the associated SeriesAka record was rejected.
SeriesAka100	SeriesAka	Warning	Language is not a valid value. Refer to the Batch Reference Guide for valid values. The default value of 'English' was used.
SeriesAka101	SeriesAka	Warning	SeriesAka Action was not a valid value ('Add', 'Change', 'Delete' or blank). The Action was modified to 'Add' and the Series Aka record was added.
SeriesAka102	SeriesAka	Warning	SeriesAka Action was not 'Add' or blank when the Series Action was 'Add' or blank. The Action was modified to 'Add' and the Series Aka record was added.

Number	Source	Type	Description
SeriesAka103	SeriesAka	Warning	SeriesAka Version is not a valid value. Refer to the Batch Reference Guide for valid values. The default value of '(Unknown)' was used.
SeriesAka104	SeriesAka	Warning	SeriesAka Action is 'Change' and no record exists in RapidCue. The Action was modified to 'Add' and the SeriesAka record was added.
SeriesAka105	SeriesAka	Warning	SeriesAka Action was 'Add' or blank when the record already exists. The Action was modified to 'Change' and the SeriesAka record was updated.
DB202	SeriesAka	Reject SeriesAka	SeriesAKA record failed to save to the database. The SeriesAKA record is rejected.

#### 4.6 PROGRAM

Below are the validations performed on the Program record.

Number	Source	Type	Description
XSDReject	Program	Reject File	Line-9, Column-9: The 'CreatorID' attribute is invalid - The value " is invalid according to its datatype 'http://www.w3.org/2001/XMLSchema:integer' - The string " is not a valid Integer value.
XSDReject	Program	Reject File	Line-9, Column-9: The 'CueSheetType' attribute is invalid - The value " is invalid according to its datatype 'CueSheetTypeValues' - The string " is not a valid Integer value. Or Line-9, Column-9: The 'CueSheetType' attribute is invalid - The value '5' is invalid according to its datatype 'CueSheetTypeValues' - The Enumeration constraint failed.
Program200	Program	Reject CueSheet	When the CueSheetType is 2, both AirDate and ProductionNumber are required and the AirDate must be a valid date. The Program record and all associated records were rejected.
Program201	Program	Reject CueSheet	At least one of: AirDate, ProductionNumber, or EpisodeNumber must have a value. The Program record and all associated records were rejected.
Program202	Program	Reject CueSheet	CreatorID is an invalid value or blank. Validate CreatorID or contact RapidCue at info@rapidcue.com. The Program record and all associated records were rejected.
Program203	Program	Reject CueSheet	MasterCueSheetFromDate was not less than or equal to the MasterCueSheetToDate and the MasterCueSheetIndicator was set to 'Yes'. The Program record and all associated records were rejected.

Number	Source	Type	Description
Program204	Program	Reject CueSheet	One or more required Series values are missing. A Series requires both SeriesName and SeriesSubmitterNumber along with an associated Series record. The Program record and all associated records were rejected.
Program205	Program	Reject CueSheet	Program Name is a required field. The Program record and all associated records were rejected.
Program206	Program	Reject CueSheet	SubmitterNumber is required. The Program record and all associated records were rejected.
Program207	Program	Reject CueSheet	The ProgramVersion must match the Series Version when the Program is an episode in a Series. The Program record and all associated records were rejected.
Program208	Program	Reject CueSheet	The Program is a duplicate of another Program in the submission file. A Program can be represented only one time per submission. The Program record and all associated records were rejected.
Program209	Program	Reject CueSheet	CueSheet is invalid because no Cue record followed the Program record. The Program record and all associated records were rejected.
Program210	Program	Reject CueSheet	One or more Cues in the CueSheet were rejected. The Program record and all associated records were rejected.
Program211	Program	Reject CueSheet	The Series associated with this CueSheet was rejected. The Program record and all associated records were rejected.
Program212	Program	Reject CueSheet	A previous submission of this cue sheet is in use by a web application user. The Program record and all associated records were rejected.
Program100	Program	Warning	AnimationIndicator is required. Valid values are: 'Yes' or 'No'. The default value of 'No' was used.
Program101	Program	Warning	AirDate is not a valid date. The default value of a blank string was used.
Program103	Program	Warning	CueSheetType is not a valid value. Refer to the Batch Reference Guide for valid values. The default value of '1' was used.
Program104	Program	Warning	Duration is required. The default Duration value of '000001' was used.
Program105	Program	Warning	Duration must be a value that is greater than zero. The default Duration value of '000001' was used.
Program106	Program	Warning	Duration was not a valid time. The default Duration value of '000001' was used.

Number	Source	Type	Description
Program107	Program	Warning	Language value is not a valid value. Refer to the Batch Reference Guide for valid values. The default value of 'English' was used.
Program108	Program	Warning	MasterCueSheetFromDate is not a valid date and the MasterCueSheetIndicator was set to 'Yes'. The default value of '19010101' was used.
Program109	Program	Warning	MasterCueSheetIndicator is not a valid value. Valid values are: 'Yes' or 'No'. The default value of 'No' was used.
Program110	Program	Warning	MusicContentIndicator value is 'Yes' even though no cues exist. The default value of 'No' was used.
Program111	Program	Warning	MusicContentIndicator value is 'No' even though cues exist. The default value of 'Yes' was used.
Program112	Program	Warning	PartNumber was not a valid number. The default value of a blank string was used.
Program113	Program	Warning	ProductionYear is not a valid year. The default value of a blank string was used.
Program114	Program	Warning	Program Action is 'Change' and no record exists in RapidCue. The Action was modified to 'Add' and the Program record was added.
Program115	Program	Warning	Program Action was not 'Add' or blank when the Series Action was 'Add' or blank. The Action was modified to 'Add' and the Program record was added.
Program116	Program	Warning	Program RunTimeDuration is not a valid time format or blank. The default value of a blank string was used.
Program117	Program	Warning	ProgramCategory is not a valid value. Refer to the Batch Reference Guide for valid values. If the Program is an Episode the default value of 'Series' was used. If the Program is a Non-Series the default value of 'Special' was used.
Program118	Program	Warning	ProgramVersion is not a valid value. Refer to the Batch Reference Guide for valid values. The default value of '(Unknown)' was used.
Program119	Program	Warning	TotalMusicDuration is required. The default Duration value of '000001' was used.
Program120	Program	Warning	TotalMusicDuration must be a value that is greater than zero. The default value of '000001' was used.
Program121	Program	Warning	TotalMusicDuration was not a valid time. The default Duration value of '000001' was used.
Program122	Program	Warning	Program Action is 'Add' or blank and a record exists in RapidCue. The Action was modified to 'Change' and the Program record was updated.



Number	Source	Type	Description
Program123	Program	Warning	Program Action was not a valid value ('Add', 'Change', 'Delete' or blank). The Action was modified to 'Add' and the Program record was added.
Program124	Program	Warning	CueSequenceNumber either doesn't start with 1 for the first cue in the program and/or increment by 1 for subsequent Cues in the same program.
DB201	Program	Reject CueSheet	Program and/or Cue record failed to save to the database. The Program record and all associated records are rejected.

#### 4.6.1 PROGRAM AKA

Below are the validations performed on the ProgramAka record.

Number	Source	Type	Description
ProgramAka200	ProgramAka	Reject ProgramAka	ProgramAka Name is required. The ProgramAka record was rejected.
ProgramAka201	ProgramAka	Reject ProgramAka	Program Aka is a duplicate of another Program Aka in the submission. A Program Aka can be represented only one time per submission. The duplicate ProgramAka record was rejected.
ProgramAka202	ProgramAka	Reject ProgramAka	SubmitterNumber is required. The ProgramAka record was rejected.
ProgramAka203	ProgramAka	Reject ProgramAka	Since the Program record was rejected, the associated ProgramAka record was rejected.
ProgramAka100	ProgramAka	Warning	Program Aka Action is 'Add' or blank and a record exists in RapidCue. The Action was modified to 'Change' and the Program Aka record was updated.
ProgramAka101	ProgramAka	Warning	Language is not a valid value. Refer to the Batch Reference Guide for valid values. The default value of 'English' was used.
ProgramAka102	ProgramAka	Warning	ProgramAka Action was not 'Delete' when the Program Action was 'Delete'. The Action was modified to 'Delete' and the Program Aka record was deleted.
ProgramAka103	ProgramAka	Warning	ProgramAka Action was not a valid value ('Add', 'Change', 'Delete', or blank). The Action was modified to 'Add' and the ProgramAka record was added.
ProgramAka104	ProgramAka	Warning	ProgramAka Action was not 'Add' or blank when the Series or Program Action was 'Add' or blank. The Action was modified to 'Add' and the Program Aka record was added.
ProgramAka105	ProgramAka	Warning	ProgramAka Action is 'Change' and no record exists in RapidCue. The Action was modified to 'Add' and the Program Aka record was added.



Number	Source	Type	Description
ProgramAka106	ProgramAka	Warning	ProgramAka Version does not match the Program Version on the Program record. The default value of '(Unknown)' was used.
ProgramAka107	ProgramAka	Warning	ProgramAka Version is not a valid value. Refer to the Batch Reference Guide for valid values. The default value of '(Unknown)' was used.
DB203	ProgramAka	Reject ProgramAka	ProgramAka record failed to save to the database. The ProgramAka record is rejected.

#### 4.6.2 ACTOR

Below are the validations performed on the Actor record.

Number	Source	Type	Description
Actor200	Actor	Reject Actor	SubmitterNumber is required. The Actor record was rejected.
Actor201	Actor	Reject Actor	Actor LastName is a required field. The Actor record was rejected.
Actor202	Actor	Reject Actor	Actor record was rejected because the Program has an Action of 'Delete'.
Actor203	Actor	Reject Actor	Actor is a duplicate of another Actor in the CueSheet. An Actor can be represented only one time per CueSheet. The duplicate Actor record was rejected.
Actor204	Actor	Reject Actor	Since the Program record was rejected, the associated Actor record was rejected.
Actor100	Actor	Warning	Action code for the Actor record does not match the Series or Program record Action code of 'Add' or blank. The action code was modified to 'Add' and the Actor record was added.
Actor101	Actor	Warning	Actor Action was not a valid value ('Add', 'Change', 'Delete', or blank). The action was modified to 'Add' and the Actor record was added.
Actor102	Actor	Warning	Actor Role is not a valid value (Actor, Director, or Actor/Director). No value will be entered.
Actor103	Actor	Warning	Actor Action is 'Change' and no record exists in RapidCue. The Action was modified to 'Add' and the Actor record was added.
Actor104	Actor	Warning	Actor Action is 'Add' or blank and a record exists in RapidCue. The Action was modified to 'Change' and the Actor record was updated.
Actor105	Actor	Warning	Actor Action was not 'Delete' when the Program Action was 'Delete'. The Action was modified to 'Delete' and the Actor record was deleted.
DB205	Actor	Reject Actor	Actor record failed to save to the database. The Actor record is rejected.

#### 4.6.3 DIRECTOR

Below are the validations performed on the Director record.

Number	Source	Type	Description
Director200	Director	Reject Director	Director LastName is a required field. The Director record was rejected.
Director201	Director	Reject Director	Director Role was not a valid value (Actor, Director, or Actor/Director). The Director record was rejected.
Director202	Director	Reject Director	SubmitterNumber is required. The Director record was rejected.
Director203	Director	Reject Director	Director is a duplicate of another Director in the CueSheet. A Director can be represented only one time per CueSheet. The duplicate Director record was rejected.
Director204	Director	Reject Director	Since the Program record was rejected, the associated Director record was rejected.
Director100	Director	Warning	Director Action code does not match the Series or Program record action code of 'Add' or blank. The Action was modified to 'Add' and the Director record was added.
Director101	Director	Warning	Director Action was not a valid value ('Add', 'Change', 'Delete', or blank). The Action was modified to 'Add' and the Director record was added.
Director102	Director	Warning	Director Action is 'Change' and no record exists. The Action was modified to 'Add' and the Director record was added.
Director103	Director	Warning	Director Action is 'Add' or blank and a record exists. The Action was modified to 'Change' and the Director record was updated.
Director104	Director	Warning	Director Action was not 'Delete' when the Program Action was 'Delete'. The Action was modified to 'Delete' and the Director record was deleted.
DB206	Director	Reject Director	Director record failed to save to the database. The Director record is rejected.

#### 4.6.4 ORGANIZATION

Below are the validations performed on the Organization record.

Number	Source	Type	Description
Organization200	Organization	Reject Organization	Organization CompanyName is a required field. The Organization record was rejected.
Organization201	Organization	Reject Organization	Organization Role was not a valid value (Distributor, Producer). The Organization record was rejected.
Organization202	Organization	Reject Organization	SubmitterNumber is required. The Organization record was rejected.

Number	Source	Type	Description
Organization203	Organization	Reject Organization	Organization is a duplicate of another Organization in the CueSheet. An Organization can be represented only one time per CueSheet. The duplicate Organization record was rejected.
Organization204	Organization	Reject Organization	Since the Program record was rejected, the associated Organization record was rejected.
Organization100	Organization	Warning	Organization Action code for this record does not match the Series or Program record Action of 'Add' or blank. The Action was modified to 'Add' and the Organization record was added.
Organization101	Organization	Warning	Organization Action was not a valid value ('Add', 'Change', 'Delete', or blank). The Action was modified to 'Add' and the Organization record was added.
Organization102	Organization	Warning	Organization Action was not 'Delete' when the Program Action was 'Delete'. The Action was modified to 'Delete' and the Organization record was deleted.
Organization103	Organization	Warning	Organization Action is 'Change' and no record exists. The Action was modified to 'Add' and the Organization record was added.
Organization104	Organization	Warning	Organization Action is 'Add' or blank and a record exists. The Action was modified to 'Change' and the Organization record was updated.
DB207	Organization	Reject Organization	Organization record failed to save to the database. The Organization record is rejected.

#### 4.6.5 CUE

Below are the validations performed on the Cue record.

Number	Source	Type	Description
Cue200	Cue	Reject CueSheet	At least one Cue record is required when the Program Action is 'Add' or blank. The Program record and all associated records were rejected.
Cue201	Cue	Reject CueSheet	Cue Duration is not greater than zero. The Program record and all associated records were rejected.
Cue202	Cue	Reject CueSheet	Cue Name is required. The Program record and all associated records were rejected.
Cue203	Cue	Reject CueSheet	Cue SequenceNumber values are not unique within the same program. The Program record and all associated records were rejected.
Cue204	Cue	Reject CueSheet	CueUsage is not a valid value. Refer to the Batch Reference Guide for valid values. The Program record and all associated records were rejected.
Cue205	Cue	Reject CueSheet	SubmitterNumber is required. The Program record and all associated records were rejected.

Number	Source	Type	Description
Cue206	Cue	Reject CueSheet	Cue Duration is required. The Program record and all associated records were rejected.
Cue207	Cue	Reject CueSheet	Cue Duration was not a valid time. The Program record and all associated records were rejected.
Cue100	Cue	Warning	Cue Action is not a valid value ('Add', 'Change', 'Delete', or blank). The Action was modified to 'Add' and the record was added.
Cue101	Cue	Warning	Cue Action was not 'Add' or blank when the Series or Program Action was 'Add' or blank. The Action was modified to 'Add' and the Cue record was added.
Cue102	Cue	Warning	Cue Action was not 'Delete' when the Program Action was 'Delete'. The Action was modified to 'Delete' and the Cue record was deleted.
Cue103	Cue	Warning	Cue Action is 'Change' and no record exists. The Action was modified to 'Add' and the Cue record was added.
Cue105	Cue	Warning	The sum of all interested party shares is an invalid value. The value must be 0 or in the range of 99.94 to 100.06 or 199.88 to 200.12. The default value of '0' (zero) was used.
Cue106	Cue	Warning	InterestedParty record is required for this Cue when the Cue record has an Action of 'Add' or blank. The Cue record will be added with no Interested Party record.
Cue107	Cue	Warning	No InterestedParty has a role code of Arranger and the PublicDomainIndicator is 'Yes'. The value was accepted as submitted.
Cue108	Cue	Warning	PublicDomainIndicator is not a valid value ('Yes' or No). The default value of 'No' was used.
Cue109	Cue	Warning	PublicDomainTerritory is not a valid value and the PublicDomainIndicator is 'Yes'. Refer to the Batch Reference Guide for valid values. The default value of 'World' was used.
Cue110	Cue	Warning	PublicDomainTerritory is not a valid value and the PublicDomainIndicator is 'No'. The default value of a blank string was used.
Cue111	Cue	Warning	Cue Action is 'Add' and a record exists. The Action was modified to 'Change' and the Cue record was updated.
Cue112	Cue	Warning	CueSubUsage is not a valid value. Refer to the Batch Reference Guide for valid values. The default value of None was used.
Cue113	Cue	Warning	VisualSourceIndicator is not a valid value ('Yes' or No). The default value of 'No' was used.
Cue114	Cue	Warning	SyncUseIndicator is not a valid value ('Yes' or No). The default value of 'No' was used.

Number	Source	Type	Description
Cue115	Cue	Warning	MasterUseIndicator is not a valid value ('Yes' or No). The default value of 'No' was used.
DB201	Cue	Reject CueSheet	Program and/or Cue record failed to save to the database. The Program record and all associated records are rejected.

#### 4.6.5.1 INTERESTED PARTY

Below are the validations performed on the InterestedParty record.

Number	Source	Type	Description
InterestedParty200	InterestedParty	Reject InterestedParty	InterestedParty Role is not a valid value. Refer to the Batch Reference Guide for valid values. The InterestedParty record was rejected.
InterestedParty201	InterestedParty	Reject InterestedParty	SubmitterNumber is required. The InterestedParty record was rejected.
InterestedParty202	InterestedParty	Reject InterestedParty	LastName is required when the Role is Writer. When no first, middle, or last name is given the InterestedParty record is rejected.
InterestedParty203	InterestedParty	Reject InterestedParty	The CompanyName is required when the Role is Publisher or Sub Publisher or Administrator. The InterestedParty record is rejected.
InterestedParty204	InterestedParty	Reject InterestedParty	InterestedParty is a duplicate of another InterestedParty in the Cue. An InterestedParty can be represented only one time per Cue. The Name (first, middle, last or company name), Society, and Submitter Number are the same as a previous InterestedParty record in the same Cue. The duplicate InterestedParty was rejected.
InterestedParty100	InterestedParty	Warning	TISNumber is not a valid value. Refer to the Batch Reference Guide for valid values. The default value of 'Not used' was used.
InterestedParty101	InterestedParty	Warning	InterestedParty Action was not 'Delete' when the Program, or Cue Action was 'Delete'. The Action was modified to 'Delete' and the InterestedParty record was deleted.
InterestedParty102	InterestedParty	Warning	InterestedParty Action was not a valid value ('Add', 'Change', 'Delete', or blank). The Action was modified to 'Add' and the InterestedParty record was added.
InterestedParty103	InterestedParty	Warning	InterestedParty Action was not 'Add' or blank when the Series, Program, or Cue Action was 'Add' or blank. The Action was modified to 'Add' and the InterestedParty record was added.

Number	Source	Type	Description
InterestedParty104	InterestedParty	Warning	Interested Party Action is 'Change' and no record exists. The Action was modified to 'Add' and the Interested Party record was added.
InterestedParty105	InterestedParty	Warning	InterestedParty SocialSecurityNumber is not numeric. The default value of a blank string was used.
InterestedParty106	InterestedParty	Warning	InterestedParty Action is 'Add' and a record exists. The Action was modified to 'Change' and the Interested Party record was updated.
InterestedParty107	InterestedParty	Warning	No Interested Parties can be an 'Arranger' when the PublicDomainIndicator = 'No'. The value was accepted as submitted.
InterestedParty108	InterestedParty	Warning	Share value is either not numeric or not a value between 0 and 100. The default value of '00000' was used.
InterestedParty109	InterestedParty	Warning	Share value must include leading zeroes for anything less than 100%. For example: 100% = 10000, 50% = 05000 and 33.33% = 03333. The provided value was left padded with 0's (zeros).
InterestedParty110	InterestedParty	Warning	SocietyName is not a valid value. Refer to the Batch Reference Guide for valid values. The default value of 'Unknown' was used.
DB204	InterestedParty	Reject InterestedParty	Interested Party record failed to save to the database. The Interested Party record is rejected.

## 5 ACKNOWLEDGEMENTS

All submission files will be acknowledged back to the submitter to indicate success or failure. The file name of the acknowledgement will be the same as the file name of the submission. The acknowledgement format is a different format than the submission format as described below.

### 5.1 ACKNOWLEDGEMENT TYPES

There are 5 acknowledgement types:

1. Entire file reject – Nothing in the submission file could be processed.
2. Cue sheet reject – The entire Cue sheet is rejected, but other cue sheets in the file can be accepted.
3. Record reject – The Cue sheet is allowed to pass through without this piece of information. This includes: Actor, Director, InterestedParty, Organization, ProgramAka , and SeriesAka. In the past, these would have resulted in an entire CueSheet rejection.
4. Warning – Some information is incorrect. The incorrect information is changed to a default value or accepted as submitted, and the Cue sheet is sent to the PRO.
5. Processed – The record was processed successfully.

### 5.2 RECORD STATUS FORMAT

#### 5.2.1 FILE ACKNOWLEDGEMENT FORMAT

The Acknowledgement status will occur once in an acknowledgement file. The Acknowledgement status format is:

```
<Acknowledgement Status="Processed" Description="File Successfully Processed" ErrorsExist="False"
WarningsExist="False" SocietyConfirmed="BMI, ASCAP" Submitter="Sample Submitter">
```

The below table defines each element in the status format:

Field	Description
Status	Reports the status of the file. Possible values are: "Processed" – indicates the file was successfully processed "Rejected" – indicates the file was rejected and no Cue sheets were accepted
Description	A specific message to elaborate on the file status
ErrorsExist	Reports whether any errors were issued in this file. Possible values are: "True" – Errors exist in the file "False" – No errors exist in the file
WarningsExist	Reports whether any warnings were issued in this file. Possible values are: "True" – Warnings exist in the file "False" – No warnings exist in the file
SocietyConfirmed	Indicates the societies that received the validated RapidCue file. The values will be comma delimited society names.
Submitter	The organization that submitted the file to RapidCue.

**Processed Example:**

```
<Acknowledgement Status="Processed" Description="File Successfully Processed" ErrorsExist="True"
WarningsExist="True" SocietyConfirmed="BMI, ASCAP" Submitter="Sample Submitter">
```

**Rejected Example:**

```
<Acknowledgement Status="Rejected" Description="File Not Processed" ErrorsExist="True"
WarningsExist="True" SocietyConfirmed="BMI, ASCAP" Submitter="Sample Submitter">
```

### 5.2.2 MUSICCUE STATUS FORMAT

The MusicCue status will occur once in an acknowledgement file. The MusicCue status format is:

```
<MusicCue Status="Accepted"></MusicCue>
```

Field	Description
Status	Reports the status of the file. Possible values are: "Accepted", "Rejected"

**Processed Example:**

```
<MusicCue Status="Accepted"></MusicCue>
```

**Rejected Example:**

```
<MusicCue Status="Rejected"></MusicCue>
```

### 5.2.3 CREATOR STATUS FORMAT

The Creator status occurs at least once in an acknowledgement file. The Creator status format is:

```
<Creator Status="Accepted" CreatorID="999" Name="Sample Name"></Creator>
```

Field	Description
Status	Reports the status of the Creator record. Possible values are: "Accepted" – indicates the record was successfully processed "Rejected" – indicates the record was rejected.

**Accepted Example:**

```
<Creator Status="Accepted" CreatorID="999" Name="Sample Name">
```

**Rejected Example:**

```
<Creator Status="Rejected" CreatorID="999" Name="Sample Name ">
```



#### 5.2.4 SERIES STATUS FORMAT

The Series status occurs at least once in an acknowledgement file. The Series status format is:

```
<Series Status="Accepted" Name="Series Name" SubmitterNumber="SubNo999" CreatorID="999"></Series>
```

Field	Description
Status	Reports the status of the Series record. Possible values are: "Accepted" – indicates the record was successfully processed "Rejected" – indicates the record was rejected.
Name	Series Name
SubmitterNumber	Series Submitter Number

##### Accepted Example:

```
<Series Status="Accepted" Name="Series Name" SubmitterNumber="SubNo999" CreatorID="999"></Series>
```

##### Rejected Example:

```
<Series Status="Rejected" Name="Series Name" SubmitterNumber="SubNo999" CreatorID="999">
```

#### 5.2.5 PROGRAM STATUS FORMAT

The Program status occurs at least once in an acknowledgement file. The Program status format is:

```
<Program Status="Accepted" Name="Program Name" SubmitterNumber="SubNo999" SeriesName=""  
SeriesSubmitterNumber="">
```

Field	Description
Status	Reports the status of the Program record. Possible values are: "Accepted" – indicates the record was successfully processed "Rejected" – indicates the record was rejected.
Name	Program Name
SubmitterNumber	Program Submitter Number
SeriesName	Series Name if the program is an episode
SeriesSubmitterNumber	Series Submitter Number if the program is an episode

##### Accepted Example:

```
<Program Status="Accepted" Name="Program Name" SubmitterNumber="SubNo999" SeriesName="Series  
Name" SeriesSubmitterNumber="SeriesSubNo999">
```

##### Rejected Example:

```
<Program Status="Rejected" Name="Program Name" SubmitterNumber="Submitter Number 999"  
SeriesName="Sample Series" SeriesSubmitterNumber="Series Submitter Number 999">
```

### 5.3 VALIDATION MESSAGE FORMAT

The validation message format is the same regardless of the record. The format of the message is:

Field	Description
Warning/Error Number	Identifier for the specific message
Source	Record Location within the submission file where the validation issue occurred
Description	Actual validation message
Value	Contains the value of the field that had a validation issue if applicable

#### 5.3.1 CREATOR

The Creator validation message occurs whenever there is a warning or error when processing the Creator records in a file. Sample Creator validation messages are below:

**Warning Example:**

```
<Warning Number="Creator107" Source="Creator" Description="ContactName does not match the name associated with the given CreatorId. The default value of a blank string was used." Value="100" />
```

**Error Example:**

```
<Error Number="Creator201" Source="Creator" Description="CreatorID is an invalid value or blank. Validate your CreatorID or contact RapidCue at info@rapidcue.com. The entire file was rejected." Value="100" />
```

#### 5.3.2 SERIES

The Series validation message occurs whenever there is a warning or error when processing any Series records in a file. Sample Series validation messages are below:

**Warning Example:**

```
<Warning Number="Series103" Source="Series" Description="Series Action is 'Change' and no record exist. The Action was modified to 'Add' and the Series record was added." Value="Change" />
```

**Error Example:**

```
<Error Number="Series201" Source="Series" Description="CreatorID is an invalid value. Validate Creator Id or contact RapidCue at info@rapidcue.com. The Series record and all associated CueSheets were rejected." Value="999" />
```

##### 5.3.2.1 SERIES AKA

The SeriesAKA validation message occurs whenever there is a warning or error when processing any SeriesAKA records in a file. Sample SeriesAka validation messages are below:

**Warning Example:**

```
<Warning Number="SeriesAka102" Source="Series" Description="SeriesAka Action was not 'Add' or blank when the Series Action was 'Add' or blank. The Action was modified to 'Add' and the Series Aka record was added." Value="Change" />
```

**Error Example:**

```
<Error Number="SeriesAka200" Source="Series" Description="SeriesAka Name is required. The SeriesAka record was rejected." Value="" />
```

**5.3.3 PROGRAM RECORD**

The Program validation message occurs whenever there is a warning or error when processing any Program records in a file. Sample Program validation messages are below:

**Warning Example:**

```
<Warning Number="Program105" Source="Program" Description="Duration must be a value that is greater than zero. The default Duration value of '000001' was used." Value="000000" />
```

**Error Example:**

```
<Error Number="Program204" Source="Program" Description="One or more required Series values are missing. A Series requires both SeriesName and SeriesSubmitterNumber along with an associated Series record. The Program record and all associated records were rejected." Value="Sample Series Name" />
```

**5.3.3.1 PROGRAM AKA RECORD**

The ProgramAKA validation message occurs whenever there is a warning or error when processing any ProgramAKA records in a file. Sample ProgramAka validation messages are below:

**Warning Example:**

```
<Warning Number="ProgramAka104" Source=" ProgramAka " Description="ProgramAka Action was not 'Add' or blank when the Series or Program Action was 'Add' or blank. The Action was modified to 'Add' and the ProgramAka record was added." Value="Change" />
```

**Error Example:**

```
<Error Number="ProgramAka200" Source=" ProgramAka " Description=" ProgramAka Name is required. The ProgramAka record was rejected." Value="" />
```

**5.3.3.2 ACTOR RECORD**

The Actor validation message occurs whenever there is a warning or error when processing any Actor records in a file. Sample Actor validation messages are below:

**Warning Example:**

```
<Warning Number="Actor100" Source="Actor" Description="Action code for the Actor record does not match the Series or Program record Action code of 'Add' or blank. The action code was modified to 'Add' and the Actor record was added." Value="Change" />
```

**Error Example:**

```
<Error Number="Actor201" Source="Actor" Description="Actor Last name is a required field. The Actor record was rejected." Value="" />
```

### 5.3.3.3 DIRECTOR RECORD

The Director validation message occurs whenever there is a warning or error when processing any Director records in a file. Sample Director validation messages are below:

**Warning Example:**

```
<Warning Number="Director100" Source="Director" Description="Director Action code does not match the Series or Program record action code of 'Add' or blank. The Action was modified to 'Add' and the Director record was added." Value="Change" />
```

**Error Example:**

```
<Error Number="Director200" Source="Director " Description="Director Last Name is a required field. The Director record was rejected." Value="" />
```

### 5.3.3.4 ORGANIZATION RECORD

The Organization validation message occurs whenever there is a warning or error when processing any Organization records in a file. Sample Organization validation messages are below:

**Warning Example:**

```
<Warning Number="Organization101" Source="Organization" Description=" Organization Action was not a valid value ('Add', 'Change', 'Delete', or blank). The Action was modified to 'Add' and the Organization record was added." Value="Add123" />
```

**Error Example:**

```
<Error Number="Organization200" Source="Organization" Description=" Organization CompanyName is a required field. The Organization record was rejected." Value="" />
```

### 5.3.3.5 CUE RECORD

The Cue validation message occurs whenever there is a warning or error when processing any Cue records in a file. When a Cue record has a status of "Rejected" but there is no validation message, then the record was rejected due to a rejection at the Program, Series, or Creator. Sample Cue validation messages are below:

**Warning Example:**

```
<Warning Number="Cue106" Source="Cue" Description=" Interested Party record is required for this Cue when the Cue record has an Action of "Add" or blank. The Cue record will be added with no Interested Party record." Value="" />
```

**Error Example:**

```
<Error Number="Cue204" Source="Cue" Description="CueUsage is not a valid value. Refer to the Batch Reference Guide for valid values. The Program record and all associated records were rejected." Value="" />
```

### 5.3.3.6 INTERESTED PARTY RECORD

The InterestedParty validation message occurs whenever there is a warning or error when processing any InterestedParty records in a file. When an InterestedParty record has a status of "Rejected" but there is no validation message, then the record was rejected due to a rejection at the Cue, Program, Series, or Creator. Sample InterestedParty validation messages are below:

**Warning Example:**

```
<Warning Number="InterestedParty105" Source="InterestedParty" Description="InterestedParty  
SocialSecurityNumber is not numeric. The default value of a blank string was used." Value="555AJE9999" />
```

**Error Example:**

```
<Error Number="InterestedParty200" Source="InterestedParty" Description="InterestedParty Role is not a valid  
value. Refer to the Batch Reference Guide for valid values. The InterestedParty record was rejected." Value="" />
```

## A APPENDICES

The Appendices mentioned throughout this document and in various warning/error messages are listed below.

### A.1 ACTION CODES

The valid Action Codes are:

- Add
- Change
- Delete

### A.2 COUNTRY/TIS NUMBER

Valid Country/TIS numbers are:

DESCRIPTION	TIS Number
Not Used	1
United States of America	840
AFGHANISTAN	4
AFRICA	2100
ALBANIA	8
ALGERIA	12
ANDORRA	20
ANGOLA	24
ANTIGUA AND BARBUDA	28
ARGENTINA	32
ARMENIA	51
AUSTRALIA	36
AUSTRIA	40
AZERBAIJAN	31
BAHAMAS	44
BAHRAIN	48
BALKANS	2108
BANGLADESH	50
BARBADOS	52
BELARUS	112
BELGIUM	56
BELIZE	84
BENIN	204
BHUTAN	64
BOLIVIA	68
BOSNIA AND HERZEGOVINA	70
BOTSWANA	72

DESCRIPTION	TIS Number
BRAZIL	76
BRUNEI DARUSSALAM	96
BULGARIA	100
BURKINA FASO	854
BURUNDI	108
CAMBODIA	116
CAMEROON	120
CANADA	124
CAPE VERDE	132
CENTRAL AFRICAN REPUBLIC	140
CENTRAL AMERICA	2113
CHAD	148
CHILE	152
CHINA	156
COLOMBIA	170
COMOROS	174
CONGO	178
CONGO, THE DEMOCRATIC REPUBLIC OF THE	180
COSTA RICA	188
COTE D'IVOIRE	384
CROATIA	191
CUBA	192
CYPRUS	196
CZECH REPUBLIC	203
CZECHOSLOVAKIA	200
DENMARK	208
DJIBOUTI	262

DESCRIPTION	TIS Number
DOMINICA	212
DOMINICAN REPUBLIC	214
EASTERN EUROPE	2119
ECUADOR	218
EGYPT	818
EL SALVADOR	222
EQUATORIAL GUINEA	226
ERITREA	232
ESTONIA	233
ETHIOPIA	230
EUROPEAN UNION	2123
FIJI	242
FINLAND	246
FRANCE	250
FRENCH POLYNESIA	258
GABON	266
GAMBIA	270
GEORGIA	268
GERMAN DEMOCRATIC REPUBLIC	278
GERMANY	276
GHANA	288
GREECE	300
GRENADA	308
GSA COUNTRIES	2124
GUATEMALA	320
GUINEA	324
GUINEA-BISSAU	624
GUYANA	328
HAITI	332
HOLY SEE (VATICAN CITY STATE)	336
HONDURAS	340
HONG KONG	344
HUNGARY	348
ICELAND	352
INDIA	356
INDONESIA	360
IRAQ	368
IRELAND	372

DESCRIPTION	TIS Number
ISRAEL	376
ITALY	380
JAMAICA	388
JAPAN	392
JORDAN	400
KAZAKSTAN	398
KENYA	404
KIRIBATI	296
KUWAIT	414
KYRGYZSTAN	417
LAO PEOPLE'S DEMOCRATIC REPUBLIC	418
LATVIA	428
LEBANON	422
LESOTHO	426
LIBERIA	430
LIBYAN ARAB JAMAHIRIYA	434
LIECHTENSTEIN	438
LITHUANIA	440
LUXEMBOURG	442
MADAGASCAR	450
MALAWI	454
MALAYSIA	458
MALDIVES	462
MALI	466
MALTA	470
MARSHALL ISLANDS	584
MAURITANIA	478
MAURITIUS	480
MEXICO	484
MIDDLE EAST	2125
MONACO	492
MONGOLIA	496
MOROCCO	504
MOZAMBIQUE	508
MYANMAR	104
NAFTA COUNTRIES	2126
NAMIBIA	516
NAURU	520

DESCRIPTION	TIS Number
NEPAL	524
NETHERLANDS	528
NEW ZEALAND	554
NICARAGUA	558
NIGER	562
NIGERIA	566
NORWAY	578
OCEANIA	2130
OMAN	512
PAKISTAN	586
PALAU	585
PANAMA	591
PAPUA NEW GUINEA	598
PARAGUAY	600
PERU	604
PHILIPPINES	608
POLAND	616
PORTUGAL	620
PUERTO RICO	630
QATAR	634
ROMANIA	642
RUSSIAN FEDERATION	643
RWANDA	646
SAINT KITTS AND NEVIS	659
SAINT LUCIA	662
SAINT VINCENT AND THE GRENADINES	670
SAMOA	882
SAN MARINO	674
SAO TOME AND PRINCIPE	678
SAUDI ARABIA	682
SCANDINAVIA	2131
SENEGAL	686
SEYCHELLES	690

DESCRIPTION	TIS Number
SOMALIA	706
SOUTH AFRICA	710
SPAIN	724
SRI LANKA	144
SUDAN	736
SURINAME	740
SWAZILAND	748
SWEDEN	752
SWITZERLAND	756
SYRIAN ARAB REPUBLIC	760
TAIWAN, PROVINCE OF CHINA	158
TAJIKISTAN	762
TANZANIA	834
THAILAND	764
TOGO	768
TONGA	776
TRINIDAD AND TOBAGO	780
TUNISIA	788
TURKEY	792
TURKMENISTAN	795
TUVALU	798
UGANDA	800
UKRAINE	804
UNITED ARAB EMIRATES	784
UNITED KINGDOM	826
URUGUAY	858
USSR	810
UZBEKISTAN	860
VANUATU	548
VENEZUELA	862
VIET NAM	704
WEST INDIES	2134
WESTERN SAHARA	732



DESCRIPTION	TIS Number
SIERRA LEONE	694
SINGAPORE	702
SLOVAKIA	703
SLOVENIA	705
SOLOMON ISLANDS	90

DESCRIPTION	TIS Number
YEMEN	886
YUGOSLAVIA	890
ZAMBIA	894
ZIMBABWE	716

### A.3 CREATOR TYPE

The valid CreatorTypes are:

Cable Source	Network
Distributor	Production Company

### A.4 CUE SHEET TYPE

The valid values for CueSheetType are:

- 1 = Original Cue Sheet
- 2 = Repeat Cue Sheet

### A.5 CUE USAGE

The valid values for CueUsage are:

Background	Film Theme Open Visual Vocal
Background Instrumental	Indistinguishable
Background Vocal	Logo
Bumper	Main Title Theme
Closing Theme	Opening Theme
End Title Theme	Segment Theme
Film Theme Close	Theme Instrumental Close
Film Theme Close Background Instrumental	Theme Instrumental Open
Film Theme Close Background Vocal	Theme Vocal Close
Film Theme Close Visual Instrumental	Theme Vocal Open
Film Theme Close Visual Vocal	Visual Dance
Film Theme Open	Visual Instrumental
Film Theme Open Background Instrumental	Visual Performance Accompaniment
Film Theme Open Background Vocal	Visual Vocal
Film Theme Open Visual Instrumental	

### A.6 CUE SUBUSAGE

The valid values for CueSubUsage are:

None	Live Performance Symphonic
A Cappella	Lyricless Vocals
Dance	Noodling
Humming	Spoken
Indistinguishable	Whistling

## A.7 INTERESTED PARTY (IP) ROLES

The valid values for IP Roles are:

Actor	Composer	Sub Arranger
Actor/Director	Composer/Author	Sub Author
Adapter	Director	Sub Publisher
Administrator	Distributor	Translator
Arranger	Producer	Unknown
Author	Publisher	

## A.8 LANGUAGE

The valid values for Language are:

Abkhazian	Finnish	Lingala	Sindhi
Afar	French	Lithuanian	Singhalese
Africaans	Frisian	Macedonian	Siswati
Albanian	Galician	Malagasy	Slovak
Amharic	Georgian	Malay	Slovenian
Arabic	German	Malayalam	Somali
Armenian	Greek	Maltese	Spanish
Assamese	Greenlandic	Maori	Sudanese
Aymara	Guarani	Marathi	Swahili
Azerbaijani	Gujarati	Moldavian	Swedish
Bashkir	Hausa	Mongolian	Tagalog
Basque	Hebrew	Nauru	Tajik
Bengali	Hindi	Nepali	Tamil
Bhutani	Hungarian	Norwegian	Tatar
Bihari	Icelandic	Occitan	Tegulu
Bislama	Indonesian	Oriya	Thai
Breton	Interlingua	Oromo	Tibetan
Bulgarian	Interlingue	Pashto	Tigrinya
Burmese	Inupiak	Polish	Tonga
Byelorussian	Irish	Portuguese	Tsonga
Cambodian	Italian	Punjabi	Turkish
Catalan	Japanese	Quechua	Turkmen
Chinese	Javanese	Rhaeto-Romance	Twi
Corsican	Kannada	Romanian	Ukranian
Croatian	Kashmiri	Russian	Urdu
Czech	Kazakh	Samoan	Uzbek
Danish	Kinyarwanda	Sangro	Vietnamese
Dutch	Kirghiz	Sanskrit	Volapuk
English	Kirundi	Scots Gaelic	Welsh

Esperanto	Korean	Serbian	Wolof
Estonian	Kurdish	Serbo-Croatian	Xhosa
Faeroese	Laothian	Sesotho	Yiddish
Farsi	Latin	Setswana	Yoruba
Fiji	Latvian	Shona	Zulu

## A.9 PROGRAM CATEGORY

The valid values for Program Category are:

Broadcast	Music Special	Special
Cartoon	Music Video	Sports
Children's Special	Non Broadcast	Theme Park
Cinema	Película	Trailer
Mini-Series	Religious Special	TV Movie
Movie	Seasonal Special	

## A.10 SENDER TYPES

Valid Sender types are:

Cable Source	Production Company
Distributor	Publisher
Network	Writer
Other	

## A.11 SERIES CATEGORY

The valid values for Series Category are:

Arts	Instructional	Reality
Broadcast Series	Magazine News	Religious
Cartoon Series	Music	Series
Children's Show	Music Video Series	Sporting Event
Daytime Soap	News	Sports Anthology
Entertainment News	Non Broadcast Series	Sports Related
Finance	Novela	Syndicated
First Run Syndicated	Paid Programs	Talk Show
Game Show	Play-off Sport	Team vs. Team Sport
Health	Pseudo-Sport	Theme Park Series
Hobbies/Craft	Public Affairs	

## A.12 SOCIETY

The valid values for Society are:

ASCAP	COTT	SADA
BMI	DACS	SADAIC
Unknown	DALRO	SADEMBRA
ABRAMUS	DPRS	SADH

ACAM	DSS	SAMRO
ACDAM	EAU	SARRAL
ACEMLA	ECCO	SAYCE
ACUM	ESMAA	SAYCO
ADAGP	FILMAUTOR	SAZAS
ADDAF	FILSCAP	SBACEM
AEPI	FOX	SBAT
AGADU	GEMA	SCAU
AGAYC	GESATCH	SCD
AKKA	GHAMRO	SDRM
AKM	GMR	SESAC
ALBAUTOR	HAA	SGAE
ALCS	HDS	SIAE
AMAR	HEXACORP/ORFIUM	SICAM
AMCOS	HUNGART	SLPRS
AMRA	IMRO	SOBODAYC
APA	IPRS	SOCAN
APDASPAC	JACAP	SOCINADA
APDAYC	JASRAC	SOCINPRO
APRA	KCI	SODACT
ARGENTOR	KODA	SODART
ARS	KOMCA	SODRAC
ARTISJUS	KOPIOSTO	SOFAM
ASSIM	LAA	SOKOJ
AUME	LATGA	SOMAAP
AWA	MACP	SONECA
BBDA	MASA	SOUNDREEF
BCDA	MCPS	SOZA
BEELDRECH	MCSC	SPA
BGDA	MCSK	SPAC
BILD-KUN	MCSN	SPACEMF
BMDA	MCT	STEF
BNDA	MESAM	STEMRA
BONO	MRS	STIM
BSCAP	MSG	SUISA
BSDA	MUSICAUT	TEATERAU
BUBEDRA	MUST	TEOSTO
BUCUDA	NASCAM	TONO
BUMA	NCB	UACRR
BUMDA	NEXTONE	UBC
BURIDA	NS	UCMR
BUS	OMDA	UNISON
BUTODRA	ONDA	UPRS

CAPAC	OSA	VAGA
CASH	PD	VBK
CASP	PROCAN	VCPMC
CHA	PRS	VEGAP
CMRRA	RAO	VISCOPY
COMPASS	SABAM	WORT
COPY-DAN	SACD	ZAIS
COSCAP	SACEM	ZAMCOPS
COSGA	SACERAU	ZAMP (SOCOM)
COSOMA	SACM	ZIMRA
COSOTA	SACVEN	

### A.13 VERSION

The valid values for Series Version and Program Version are:

(Unknown)	Music Video	PBS
Airline	Network	Syndicated
Cable	New Media	Theatrical
Edited for TV	Non Broadcast	Theme Park
Home Video	Non US	US
Internet		

### A.14 ACCEPTED UTF-8 CHARACTERS

Valid characters in RapidCue XML:

#### A.14.1 BASIC LATIN

UTF-8 (hex)	Character	Name
20		Space
21	!	Exclamation Mark
22	"	Quotation Mark (must be escaped with &quot;)
23	#	Number Sign
24	\$	Dollar Sign
25	%	Percent Sign
26	&	Ampersand (must be escaped with &amp;)
27	'	Apostrophe (must be escaped with &apos;)
28	(	Left Parenthesis
29	)	Right Parenthesis
2a	*	Asterisk
2b	+	Plus Sign
2c	,	Comma
2d	-	Hyphen-Minus

UTF-8 (hex)	Character	Name
50	P	Latin Capital Letter P
51	Q	Latin Capital Letter Q
52	R	Latin Capital Letter R
53	S	Latin Capital Letter S
54	T	Latin Capital Letter T
55	U	Latin Capital Letter U
56	V	Latin Capital Letter V
57	W	Latin Capital Letter W
58	X	Latin Capital Letter X
59	Y	Latin Capital Letter Y
5a	Z	Latin Capital Letter Z
5b	[	Left Square Bracket
5c	\	Reverse Solidus
5d	]	Right Square Bracket

UTF-8 (hex)	Character	Name
2e	.	Full Stop
2f	/	Solidus
30	0	Digit Zero
31	1	Digit One
32	2	Digit Two
33	3	Digit Three
34	4	Digit Four
35	5	Digit Five
36	6	Digit Six
37	7	Digit Seven
38	8	Digit Eight
39	9	Digit Nine
3a	:	Colon
3b	;	Semicolon
3c	<	Less-Than Sign (must be escaped with &lt;)
3d	=	Equals Sign
3e	>	Greater-Than Sign (must be escaped with &gt;)
3f	?	Question Mark
40	@	Commercial At
41	A	Latin Capital Letter A
42	B	Latin Capital Letter B
43	C	Latin Capital Letter C
44	D	Latin Capital Letter D
45	E	Latin Capital Letter E
46	F	Latin Capital Letter F
47	G	Latin Capital Letter G
48	H	Latin Capital Letter H
49	I	Latin Capital Letter I
4a	J	Latin Capital Letter J
4b	K	Latin Capital Letter K
4c	L	Latin Capital Letter L
4d	M	Latin Capital Letter M
4e	N	Latin Capital Letter N
4f	O	Latin Capital Letter O

UTF-8 (hex)	Character	Name
5e	^	Circumflex Accent
5f	_	Low Line
60	`	Grave Accent
61	a	Latin Small Letter a
62	b	Latin Small Letter b
63	c	Latin Small Letter c
64	d	Latin Small Letter d
65	e	Latin Small Letter e
66	f	Latin Small Letter f
67	g	Latin Small Letter g
68	h	Latin Small Letter h
69	i	Latin Small Letter i
6a	j	Latin Small Letter j
6b	k	Latin Small Letter k
6c	l	Latin Small Letter l
6d	m	Latin Small Letter m
6e	n	Latin Small Letter n
6f	o	Latin Small Letter o
70	p	Latin Small Letter p
71	q	Latin Small Letter q
72	r	Latin Small Letter r
73	s	Latin Small Letter s
74	t	Latin Small Letter t
75	u	Latin Small Letter u
76	v	Latin Small Letter v
77	w	Latin Small Letter w
78	x	Latin Small Letter x
79	y	Latin Small Letter y
7a	z	Latin Small Letter z
7b	{	Left Curly Bracket
7c		Vertical Line
7d	}	Right Curly Bracket
7e	~	Tilde

**A.14.2 LATIN-1 SUPPLEMENT**

UTF-8 (hex)	Character	Name
a1	¡	Inverted Exclamation Mark
a2	¢	Cent Sign
a3	£	Pound Sign
a4	¤	Currency Sign
a5	¥	Yen Sign
a6	¦	Broken Bar
a7	§	Section Sign
a8	¨	Diaeresis
a9	©	Copyright Sign
aa	ª	Feminine Ordinal Indicator
ab	«	Left-Pointing Double Angle Quotation Mark
ac	¬	Not Sign
ad		Soft Hyphen
ae	®	Registered Sign
af	ˉ	Macron
bo	°	Degree Sign
b1	±	Plus-Minus Sign
b2	²	Superscript Two
b3	³	Superscript Three
b4	´	Acute Accent
b5	µ	Micro Sign
b6	¶	Pilcrow Sign
b7	·	Middle Dot
b8	¸	Cedilla

UTF-8 (hex)	Character	Name
d1	Ñ	Latin Capital Letter N with Tilde
d2	Ò	Latin Capital Letter O with Grave
d3	Ó	Latin Capital Letter O with Acute
d4	Ô	Latin Capital Letter O with Circumflex
d5	Õ	Latin Capital Letter O with Tilde
d6	Ö	Latin Capital Letter O with Diaeresis
d7	×	Multiplication Sign
d8	Ø	Latin Capital Letter O with Stroke
d9	Ù	Latin Capital Letter U with Grave
da	Ú	Latin Capital Letter U with Acute
db	Û	Latin Capital Letter U with Circumflex
dc	Ü	Latin Capital Letter U with Diaeresis
dd	Ý	Latin Capital Letter Y with Acute
de	Þ	Latin Capital Letter Thorn
df	ß	Latin Small Letter Sharp S
eo	à	Latin Small Letter A with Grave
e1	á	Latin Small Letter A with Acute
e2	â	Latin Small Letter A with Circumflex
e3	ã	Latin Small Letter A with Tilde
e4	ä	Latin Small Letter A with Diaeresis
e5	å	Latin Small Letter A with Ring Above
e6	æ	Latin Small Letter Ae
e7	ç	Latin Small Letter C with Cedilla
e8	è	Latin Small Letter E with Grave

UTF-8 (hex)	Character	Name
b9	¹	Superscript One
ba	º	Masculine Ordinal Indicator
bb	»	Right-Pointing Double Angle Quotation Mark
bc	¼	Vulgar Fraction One Quarter
bd	½	Vulgar Fraction One Half
be	¾	Vulgar Fraction Three Quarters
bf	¿	Inverted Question Mark
c0	À	Latin Capital Letter A with Grave
c1	Á	Latin Capital Letter A with Acute
c2	Â	Latin Capital Letter A with Circumflex
c3	Ã	Latin Capital Letter A with Tilde
c4	Ä	Latin Capital Letter A with Diaeresis
c5	Å	Latin Capital Letter A with Ring Above
c6	Æ	Latin Capital Letter Ae
c7	Ç	Latin Capital Letter C with Cedilla
c8	È	Latin Capital Letter E with Grave
c9	É	Latin Capital Letter E with Acute
ca	Ê	Latin Capital Letter E with Circumflex
cb	Ë	Latin Capital Letter E with Diaeresis
cc	Ì	Latin Capital Letter I with Grave
cd	Í	Latin Capital Letter I with Acute
ce	Î	Latin Capital Letter I with Circumflex
cf	Ï	Latin Capital Letter I with Diaeresis
do	Ð	Latin Capital Letter Eth

UTF-8 (hex)	Character	Name
eg	é	Latin Small Letter E with Acute
ea	ê	Latin Small Letter E with Circumflex
eb	ë	Latin Small Letter E with Diaeresis
ec	ì	Latin Small Letter I with Grave
ed	í	Latin Small Letter I with Acute
ee	î	Latin Small Letter I with Circumflex
ef	ï	Latin Small Letter I with Diaeresis
fo	ð	Latin Small Letter Eth
f1	ñ	Latin Small Letter N with Tilde
f2	ò	Latin Small Letter O with Grave
f3	ó	Latin Small Letter O with Acute
f4	ô	Latin Small Letter O with Circumflex
f5	õ	Latin Small Letter O with Tilde
f6	ö	Latin Small Letter O with Diaeresis
f7	÷	Division Sign
f8	ø	Latin Small Letter O with Stroke
f9	ù	Latin Small Letter U with Grave
fa	ú	Latin Small Letter U with Acute
fb	û	Latin Small Letter U with Circumflex
fc	ü	Latin Small Letter U with Diaeresis
fd	ý	Latin Small Letter Y with Acute
fe	þ	Latin Small Letter Thorn
ff	ÿ	Latin Small Letter Y with Diaeresis



## A.15 XML SCHEMA (XSD)

Current version of the XSD (version 1.4.5):

```
<?xml version="1.0" encoding="utf-8"?>
<xs:schema attributeFormDefault="unqualified" elementFormDefault="qualified"
xmlns:xs="http://www.w3.org/2001/XMLSchema">
  <xs:element name="MusicCue">
    <xs:complexType>
      <xs:sequence>
        <xs:element name="Creator" minOccurs="1" maxOccurs="unbounded">
          <xs:complexType>
            <xs:attribute name="CreatorID" type="xs:integer" use="required" />
            <xs:attribute name="CreatorType" type="String255" use="optional" />
            <xs:attribute name="ProductionCompanyName" type="String65" use="required" />
            <xs:attribute name="ContactName" type="String65" use="optional" />
            <xs:attribute name="Addressee" type="String65" use="optional" />
            <xs:attribute name="Building" type="String65" use="optional" />
            <xs:attribute name="Street" type="String65" use="optional" />
            <xs:attribute name="Town" type="String65" use="optional" />
            <xs:attribute name="Village" type="String65" use="optional" />
            <xs:attribute name="County" type="String65" use="optional" />
            <xs:attribute name="CountryName" type="String40" use="optional" />
            <xs:attribute name="PostalCode" type="String10" use="optional" />
            <xs:attribute name="Telephone" type="String16" use="optional" />
            <xs:attribute name="Fax" type="String16" use="optional" />
            <xs:attribute name="Email" type="String255" use="optional" />
            <xs:attribute name="Website" type="String60" use="optional" />
            <xs:attribute name="ShareScale" type="ShareScaleValues" use="optional" />
          </xs:complexType>
        </xs:element>
        <xs:element name="Series" minOccurs="0" maxOccurs="unbounded">
          <xs:complexType>
            <xs:sequence>
              <xs:element name="SeriesAka" minOccurs="0" maxOccurs="unbounded">
                <xs:complexType>
                  <xs:attribute name="Action" type="xs:string" use="required" />
                  <xs:attribute name="Name" type="String65" use="required" />
                  <xs:attribute name="Language" type="String255" use="optional" />
                  <xs:attribute name="SubmitterNumber" type="String16" use="required" />
                  <xs:attribute name="SeriesVersion" type="String255" use="optional" />
                </xs:complexType>
              </xs:element>
            </xs:sequence>
            <xs:attribute name="Action" type="xs:string" use="required" />
            <xs:attribute name="Name" type="String65" use="required" />
            <xs:attribute name="PreviousName" type="String65" use="optional" />
            <xs:attribute name="Language" type="String255" use="optional" />
            <xs:attribute name="SeriesNumber" type="String12" use="optional" />
            <xs:attribute name="SubmitterNumber" type="String16" use="required" />
          </xs:complexType>
        </xs:element>
      </xs:sequence>
    </xs:complexType>
  </xs:element>
</xs:schema>
```

```
<xs:attribute name="SeriesCategory" type="String255" use="optional" />
<xs:attribute name="SeriesVersion" type="String255" use="optional" />
<xs:attribute name="Duration" type="String6" use="optional" />
<xs:attribute name="CreatorID" type="xs:integer" use="required" />
</xs:complexType>
</xs:element>
<xs:element name="Program" minOccurs="1" maxOccurs="unbounded">
  <xs:complexType>
    <xs:sequence>
      <xs:element name="ProgramAka" minOccurs="0" maxOccurs="unbounded">
        <xs:complexType>
          <xs:attribute name="Action" type="xs:string" use="required" />
          <xs:attribute name="Name" type="String150" use="required" />
          <xs:attribute name="Language" type="String255" use="optional" />
          <xs:attribute name="SubmitterNumber" type="String16" use="required" />
          <xs:attribute name="ProgramVersion" type="String255" use="optional" />
        </xs:complexType>
      </xs:element>
      <xs:element name="Actor" minOccurs="0" maxOccurs="unbounded">
        <xs:complexType>
          <xs:attribute name="Action" type="xs:string" use="required" />
          <xs:attribute name="LastName" type="String65" use="required" />
          <xs:attribute name="FirstName" type="String65" use="optional" />
          <xs:attribute name="MiddleName" type="String65" use="optional" />
          <xs:attribute name="Role" type="String65" use="required" />
          <xs:attribute name="SubmitterNumber" type="String16" use="required" />
        </xs:complexType>
      </xs:element>
      <xs:element name="Director" minOccurs="0" maxOccurs="unbounded">
        <xs:complexType>
          <xs:attribute name="Action" type="xs:string" use="required" />
          <xs:attribute name="FirstName" type="String65" use="optional" />
          <xs:attribute name="LastName" type="String65" use="required" />
          <xs:attribute name="MiddleName" type="String65" use="optional" />
          <xs:attribute name="Role" type="String65" use="required" />
          <xs:attribute name="SubmitterNumber" type="String16" use="required" />
        </xs:complexType>
      </xs:element>
      <xs:element name="Organization" minOccurs="0" maxOccurs="unbounded">
        <xs:complexType>
          <xs:attribute name="Action" type="xs:string" use="required" />
          <xs:attribute name="CompanyName" type="String200" use="required" />
          <xs:attribute name="Role" type="String65" use="required" />
          <xs:attribute name="SubmitterNumber" type="String16" use="required" />
        </xs:complexType>
      </xs:element>
      <xs:element name="Cue" minOccurs="1" maxOccurs="unbounded">
        <xs:complexType>
          <xs:sequence>
            <xs:element name="InterestedParty" minOccurs="1" maxOccurs="unbounded">
```

```
<xs:complexType>
  <xs:attribute name="Action" type="xs:string" use="required" />
  <xs:attribute name="LastName" type="String65" use="optional" />
  <xs:attribute name="FirstName" type="String65" use="optional" />
  <xs:attribute name="MiddleName" type="String65" use="optional" />
  <xs:attribute name="CompanyName" type="String200" use="optional" />
  <xs:attribute name="Role" type="String255" use="required" />
  <xs:attribute name="NameNumber" type="String11" use="optional" />
  <xs:attribute name="SocialSecurityNumber" type="String9" use="optional" />
  <xs:attribute name="SubmitterNumber" type="String16" use="required" />
  <xs:attribute name="Shares" type="Shares" use="optional" />
  <xs:attribute name="SocietyName" type="String255" use="optional" />
  <xs:attribute name="BaseNumber" type="String13" use="optional" />
  <xs:attribute name="TISNumber" type="String4" use="optional" />
  <xs:attribute name="ISNI" type="String20" use="optional" />
</xs:complexType>
</xs:element>
</xs:sequence>
<xs:attribute name="Action" type="xs:string" use="required" />
<xs:attribute name="SequenceNumber" type="SequenceNumber" use="required" />
<xs:attribute name="Name" type="String65" use="required" />
<xs:attribute name="ISWC" type="String11" use="optional" />
<xs:attribute name="SubmitterNumber" type="String16" use="required" />
<xs:attribute name="CueUsage" type="String255" use="required" />
<xs:attribute name="CueSubUsage" type="String255" use="optional" />
<xs:attribute name="Duration" type="String6" use="required" />
<xs:attribute name="Performer" type="String65" use="optional" />
<xs:attribute name="ProductionOrigin" type="String65" use="optional" />
<xs:attribute name="LibraryName" type="String65" use="optional" />
<xs:attribute name="CDNumber" type="String9" use="optional" />
<xs:attribute name="CutNumber" type="String3" use="optional" />
<xs:attribute name="VisualSourceIndicator" type="String3" use="optional" />
<xs:attribute name="PublicDomainIndicator" type="String3" use="required" />
<xs:attribute name="PublicDomainTerritory" type="String24" use="optional" />
<xs:attribute name="SyncUseIndicator" type="String3" use="optional" />
<xs:attribute name="SyncUseLicensor" type="String65" use="optional" />
<xs:attribute name="MasterUseIndicator" type="String3" use="optional" />
<xs:attribute name="MasterUseLicensor" type="String65" use="optional" />
</xs:complexType>
</xs:element>
</xs:sequence>
<xs:attribute name="Action" type="xs:string" use="required" />
<xs:attribute name="Name" type="String150" use="required" />
<xs:attribute name="CueSheetType" type="CueSheetTypeValues" use="required" />
<xs:attribute name="MasterNumber" type="String16" use="optional" />
<xs:attribute name="ProgramVersion" type="String255" use="optional" />
<xs:attribute name="Language" type="String255" use="optional" />
<xs:attribute name="ProgramCategory" type="String255" use="optional" />
<xs:attribute name="ProductionYear" type="String4" use="optional" />
<xs:attribute name="SubmitterNumber" type="String16" use="required" />
```

```
<xs:attribute name="Duration" type="String6" use="required" />
<xs:attribute name="TotalMusicDuration" type="String6" use="required" />
<xs:attribute name="AirDate" type="String8" use="optional" />
<xs:attribute name="ProductionNumber" type="String12" use="optional" />
<xs:attribute name="EpisodeNumber" type="String12" use="optional" />
<xs:attribute name="SyndicatedNumber" type="String10" use="optional" />
<xs:attribute name="PartNumber" type="String2" use="optional" />
<xs:attribute name="Network" type="String65" use="optional" />
<xs:attribute name="PreviousName" type="String150" use="optional" />
<xs:attribute name="AnimationIndicator" type="String3" use="required" />
<xs:attribute name="RuntimeDuration" type="String6" use="optional" />
<xs:attribute name="MasterCueSheetIndicator" type="String3" use="required" />
<xs:attribute name="MasterFromDate" type="String8" use="optional" />
<xs:attribute name="MasterToDate" type="String8" use="optional" />
<xs:attribute name="MusicContentIndicator" type="String3" use="optional" />
<xs:attribute name="ISAN" type="String14" use="optional"/>
<xs:attribute name="SeriesName" type="String65" use="optional" />
<xs:attribute name="SeriesSubmitterNumber" type="String16" use="optional" />
<xs:attribute name="Season" type="String65" use="optional" />
<xs:attribute name="GracenoteTMSId" type="String16" use="optional" />
<xs:attribute name="GracenoteConnectorId" type="String16" use="optional" />
<xs:attribute name="EIDR" type="String50" use="optional" />
<xs:attribute name="CreatorID" type="xs:integer" use="required" />
</xs:complexType>
</xs:element>
</xs:sequence>
<xs:attribute name="SenderID" type="Integer9" use="required" />
<xs:attribute name="SenderName" type="String65Required" use="required" />
<xs:attribute name="SenderType" type="String255" use="optional" />
<xs:attribute name="CompanyID" type="String9" use="optional" />
<xs:attribute name="CompanyName" type="String65" use="optional" />
<xs:attribute name="ContactName" type="String65" use="optional" />
<xs:attribute name="VersionNumber" type="VersionNumberValues" use="required" />
<xs:attribute name="CreationDate" type="String8" use="required" />
<xs:attribute name="CreationTime" type="String6" use="required" />
<xs:attribute name="TransmissionDate" type="String8" use="required" />
<xs:attribute name="TransmissionTime" type="String6" use="required" />
<xs:attribute name="Action" type="ActionValues2" use="optional" />
<xs:attribute name="BatchRequest" type="Integer10" use="optional" />
<xs:attribute name="SubmissionSource" type="String32" use="optional" />
<xs:attribute name="SubmissionVersion" type="String11" use="optional" />
<xs:attribute name="TransmissionProtocol" type="String8" use="optional" />
<xs:attribute name="Addressee" type="String65" use="optional" />
<xs:attribute name="Building" type="String65" use="optional" />
<xs:attribute name="Street" type="String65" use="optional" />
<xs:attribute name="Town" type="String65" use="optional" />
<xs:attribute name="Village" type="String65" use="optional" />
<xs:attribute name="County" type="String65" use="optional" />
<xs:attribute name="CountryName" type="String40" use="optional" />
<xs:attribute name="PostalCode" type="String10" use="optional" />
```

```
<xs:attribute name="Telephone" type="String16" use="optional" />
<xs:attribute name="Fax" type="String16" use="optional" />
<xs:attribute name="Email" type="String255" use="optional" />
<xs:attribute name="Website" type="String60" use="optional" />
</xs:complexType>
</xs:element>
```

```
<xs:simpleType name="ActionValues2">
  <xs:restriction base="xs:string">
    <xs:pattern value="|(SUBMIT)"/>
  </xs:restriction>
</xs:simpleType>
```

```
<xs:simpleType name="CueSheetTypeValues">
  <xs:restriction base="xs:integer">
    <xs:enumeration value="1"></xs:enumeration>
    <xs:enumeration value="2"></xs:enumeration>
  </xs:restriction>
</xs:simpleType>
```

```
<xs:simpleType name="ShareScaleValues">
  <xs:restriction base="xs:integer">
    <xs:enumeration value="100"></xs:enumeration>
    <xs:enumeration value="200"></xs:enumeration>
  </xs:restriction>
</xs:simpleType>
```

```
<xs:simpleType name="Integer9">
  <xs:restriction base="xs:string">
    <xs:pattern value="\d{1,9}" />
  </xs:restriction>
</xs:simpleType>
```

```
<xs:simpleType name="Integer10">
  <xs:restriction base="xs:string">
    <xs:pattern value="\d{0,10}" />
  </xs:restriction>
</xs:simpleType>
```

```
<xs:simpleType name="Shares">
  <xs:restriction base="xs:string">
    <xs:maxLength value="5" />
    <xs:pattern value="([0]\d{4})|(20000)|(10000)?" />
  </xs:restriction>
</xs:simpleType>
```

```
<xs:simpleType name="SequenceNumber">
  <xs:restriction base="xs:string">
    <xs:maxLength value="4" />
```

```
<xs:pattern value="\d{1,4}" />
</xs:restriction>
</xs:simpleType>

<xs:simpleType name="VersionNumberValues">
  <xs:restriction base="xs:decimal">
    <xs:enumeration value="01.00"></xs:enumeration>
    <xs:enumeration value="01.03"></xs:enumeration>
    <xs:enumeration value="01.30"></xs:enumeration>
    <xs:enumeration value="02.00"></xs:enumeration>
    <xs:enumeration value="02.03"></xs:enumeration>
    <xs:enumeration value="02.30"></xs:enumeration>
  </xs:restriction>
</xs:simpleType>

<xs:simpleType name="String2">
  <xs:restriction base="xs:string">
    <xs:maxLength value="2" />
    <xs:pattern value="([\p{IsBasicLatin}\p{IsLatin-1Supplement}]+)"/>
  </xs:restriction>
</xs:simpleType>

<xs:simpleType name="String3">
  <xs:restriction base="xs:string">
    <xs:maxLength value="3" />
    <xs:pattern value="([\p{IsBasicLatin}\p{IsLatin-1Supplement}]+)"/>
  </xs:restriction>
</xs:simpleType>

<xs:simpleType name="String4">
  <xs:restriction base="xs:string">
    <xs:maxLength value="4" />
    <xs:pattern value="([\p{IsBasicLatin}\p{IsLatin-1Supplement}]+)"/>
  </xs:restriction>
</xs:simpleType>

<xs:simpleType name="String6">
  <xs:restriction base="xs:string">
    <xs:maxLength value="6" />
    <xs:pattern value="([\p{IsBasicLatin}\p{IsLatin-1Supplement}]+)"/>
  </xs:restriction>
</xs:simpleType>

<xs:simpleType name="String8">
  <xs:restriction base="xs:string">
    <xs:maxLength value="8" />
    <xs:pattern value="([\p{IsBasicLatin}\p{IsLatin-1Supplement}]+)"/>
  </xs:restriction>
</xs:simpleType>
```

```
<xs:simpleType name="String9">
  <xs:restriction base="xs:string">
    <xs:maxLength value="9" />
    <xs:pattern value="([\p{IsBasicLatin}\p{IsLatin-1Supplement}]+)"/>
  </xs:restriction>
</xs:simpleType>
```

```
<xs:simpleType name="String10">
  <xs:restriction base="xs:string">
    <xs:maxLength value="10" />
    <xs:pattern value="([\p{IsBasicLatin}\p{IsLatin-1Supplement}]+)"/>
  </xs:restriction>
</xs:simpleType>
```

```
<xs:simpleType name="String11">
  <xs:restriction base="xs:string">
    <xs:maxLength value="11" />
    <xs:pattern value="([\p{IsBasicLatin}\p{IsLatin-1Supplement}]+)"/>
  </xs:restriction>
</xs:simpleType>
```

```
<xs:simpleType name="String12">
  <xs:restriction base="xs:string">
    <xs:maxLength value="12" />
    <xs:pattern value="([\p{IsBasicLatin}\p{IsLatin-1Supplement}]+)"/>
  </xs:restriction>
</xs:simpleType>
```

```
<xs:simpleType name="String13">
  <xs:restriction base="xs:string">
    <xs:maxLength value="13" />
    <xs:pattern value="([\p{IsBasicLatin}\p{IsLatin-1Supplement}]+)"/>
  </xs:restriction>
</xs:simpleType>
```

```
<xs:simpleType name="String14">
  <xs:restriction base="xs:string">
    <xs:maxLength value="14" />
    <xs:pattern value="([\p{IsBasicLatin}\p{IsLatin-1Supplement}]+)"/>
  </xs:restriction>
</xs:simpleType>
```

```
<xs:simpleType name="String16">
  <xs:restriction base="xs:string">
    <xs:maxLength value="16" />
    <xs:pattern value="([\p{IsBasicLatin}\p{IsLatin-1Supplement}]+)"/>
  </xs:restriction>
</xs:simpleType>
```

```
<xs:simpleType name="String20">
```

```
<xs:restriction base="xs:string">
  <xs:maxLength value="20" />
  <xs:pattern value="([\p{IsBasicLatin}\p{IsLatin-1Supplement}]+)"/>
</xs:restriction>
</xs:simpleType>

<xs:simpleType name="String24">
  <xs:restriction base="xs:string">
    <xs:maxLength value="24" />
    <xs:pattern value="([\p{IsBasicLatin}\p{IsLatin-1Supplement}]+)"/>
  </xs:restriction>
</xs:simpleType>

<xs:simpleType name="String32">
  <xs:restriction base="xs:string">
    <xs:maxLength value="32" />
    <xs:pattern value="([\p{IsBasicLatin}\p{IsLatin-1Supplement}]+)"/>
  </xs:restriction>
</xs:simpleType>

<xs:simpleType name="String40">
  <xs:restriction base="xs:string">
    <xs:maxLength value="40" />
    <xs:pattern value="([\p{IsBasicLatin}\p{IsLatin-1Supplement}]+)"/>
  </xs:restriction>
</xs:simpleType>

<xs:simpleType name="String50">
  <xs:restriction base="xs:string">
    <xs:maxLength value="50" />
    <xs:pattern value="([\p{IsBasicLatin}\p{IsLatin-1Supplement}]+)"/>
  </xs:restriction>
</xs:simpleType>

<xs:simpleType name="String60">
  <xs:restriction base="xs:string">
    <xs:maxLength value="60" />
    <xs:pattern value="([\p{IsBasicLatin}\p{IsLatin-1Supplement}]+)"/>
  </xs:restriction>
</xs:simpleType>

<xs:simpleType name="String65">
  <xs:restriction base="xs:string">
    <xs:maxLength value="65" />
    <xs:pattern value="([\p{IsBasicLatin}\p{IsLatin-1Supplement}]+)"/>
  </xs:restriction>
</xs:simpleType>

<xs:simpleType name="String65Required">
  <xs:restriction base="xs:string">
```



```
<xs:maxLength value="65" />
<xs:pattern value="[\p{IsBasicLatin}\p{IsLatin-1Supplement}]+"/>
</xs:restriction>
</xs:simpleType>

<xs:simpleType name="String150">
  <xs:restriction base="xs:string">
    <xs:maxLength value="150" />
    <xs:pattern value="([\p{IsBasicLatin}\p{IsLatin-1Supplement}]+)"/>
  </xs:restriction>
</xs:simpleType>

<xs:simpleType name="String200">
  <xs:restriction base="xs:string">
    <xs:maxLength value="200" />
    <xs:pattern value="([\p{IsBasicLatin}\p{IsLatin-1Supplement}]+)"/>
  </xs:restriction>
</xs:simpleType>

<xs:simpleType name="String255">
  <xs:restriction base="xs:string">
    <xs:maxLength value="255" />
    <xs:pattern value="([\p{IsBasicLatin}\p{IsLatin-1Supplement}]+)"/>
  </xs:restriction>
</xs:simpleType>
</xs:schema>
```

## 6 INDEX

### A

Accepted UTF-8 Characters .....	53
acknowledgement.....	39
Acknowledgement status format.....	39
acknowledgement types .....	39
Action .....	14, 15, 17, 18, 19, 21, 29, 31, 32, 33, 34, 35, 36, 37, 38
Action Code.....	14, 15, 17, 18, 19
Action Codes .....	46
Actor .....	18, 33, 39
Actor validation message .....	43
Actor100.....	33
Actor101.....	33
Actor102.....	33
Actor103.....	33
Actor104.....	33
Actor105.....	33
Actor200.....	33
Actor201.....	33
Actor202.....	33
Actor203.....	33
Actor204.....	33
Addressee .....	12, 13
AirDate .....	16, 29, 30
Alphanumeric.....	9
AnimationIndicator .....	16, 30

### B

BaseNumber .....	22
Basic Latin .....	53
BatchRequest.....	12
Boolean.....	9
Building.....	12, 13

### C

CDNumber .....	20
Character Encoding .....	9
CISAC.....	22
CompanyID .....	11, 25
CompanyName .....	11, 19, 21, 25, 34, 37
Conditional.....	10
ContactName.....	11, 13, 26, 27
Country/TIS numbers.....	46
CountryName.....	12, 13, 25, 26
County .....	12, 13
CreationDate.....	12, 25
CreationTime .....	12, 25
Creator.....	13, 26
Creator status.....	40

Creator validation message .....	42
Creator100 .....	26
Creator101 .....	26
Creator102 .....	26
Creator103 .....	26
Creator104 .....	26
Creator105 .....	26
Creator106 .....	27
Creator107 .....	27
Creator201 .....	26
Creator202 .....	26
Creator203 .....	26
CreatorID .....	13, 14, 17, 26, 27, 29
CreatorType .....	13, 27, 49
Cue.....	19, 30, 35
Cue Name .....	19, 35
Cue sheet reject.....	39
Cue Sheet Type .....	15
Cue Usage .....	20
Cue validation message .....	44
Cue100 .....	36
Cue101 .....	36
Cue102 .....	36
Cue103 .....	36
Cue105 .....	36
Cue106 .....	36
Cue107 .....	36
Cue108 .....	36, 37
Cue109 .....	36
Cue110 .....	36
Cue111 .....	36
Cue200 .....	35
Cue201 .....	35
Cue202 .....	35
Cue203 .....	35
Cue204 .....	35, 36
Cue205 .....	35
Cue206 .....	36
Cue207 .....	36
CueSheetType.....	15, 29, 30, 49
CueUsage.....	20, 35, 36, 49
CutNumber .....	20

### D

Data Types .....	9
Date .....	9
DB200 .....	28
DB201 .....	32, 37
DB202 .....	29
DB203 .....	33

DB204 .....	38
DB205 .....	33
DB206 .....	34
DB207 .....	35
Description .....	39, 42
Director .....	18, 34, 39
Director validation message .....	44
Director100 .....	34
Director101 .....	34
Director102 .....	34
Director103 .....	34
Director104 .....	34
Director200 .....	34
Director201 .....	34
Director202 .....	34
Director203 .....	34
Director204 .....	34
Duration .....	9, 14, 16, 20, 27, 28, 30, 35, 36

## E

EIDR .....	17
Email .....	12, 14, 26
Entire file reject .....	39
EpisodeNumber .....	16, 29
ErrorsExist .....	39

## F

Fax .....	12, 14, 25, 26
Field status .....	10
File Acknowledgement Format .....	39
File Errors .....	24
File200 .....	24
FirstName .....	18, 21

## G

GracenoteConnectorId .....	17
GracenoteTMSId .....	17

## I

Interested Party validation message .....	45
InterestedParty .....	21, 36, 37, 39
InterestedParty100 .....	37
InterestedParty101 .....	37
InterestedParty102 .....	37
InterestedParty103 .....	37
InterestedParty104 .....	38
InterestedParty105 .....	38
InterestedParty106 .....	38
InterestedParty107 .....	38
InterestedParty108 .....	38
InterestedParty109 .....	38
InterestedParty110 .....	38

InterestedParty200 .....	37
InterestedParty201 .....	37
InterestedParty202 .....	37
InterestedParty203 .....	37
InterestedParty204 .....	37
IP Roles .....	50
IPI 22 .....	
IPI Name Number .....	21
ISAN .....	17
ISNI .....	22
ISWC .....	20

## L

Language .....	14, 15, 16, 18, 27, 28, 31, 32, 50
LastName .....	18, 21, 33, 34, 37
Latin-1 Supplement .....	55
LibraryName .....	20

## M

MasterCueSheetFromDate .....	29, 31
MasterCueSheetIndicator .....	16, 29, 31
MasterCueSheetToDate .....	29
MasterFromDate .....	17
MasterNumber .....	15
MasterToDate .....	17
MiddleName .....	18, 21
MusicContentIndicator .....	17, 31
MusicCue .....	11, 24
MusicCue status .....	40
MusicCue100 .....	25
MusicCue101 .....	25
MusicCue102 .....	25
MusicCue103 .....	25
MusicCue104 .....	25
MusicCue105 .....	25
MusicCue106 .....	26
MusicCue107 .....	26
MusicCue108 .....	26
MusicCue109 .....	26
MusicCue110 .....	26
MusicCue111 .....	26
MusicCue200 .....	25
MusicCue201 .....	25
MusicCue202 .....	25
MusicCue203 .....	25
MusicCue204 .....	25

## N

Name .....	14, 15, 18, 19, 41
NameNumber .....	21
No Music Cues .....	23
Numeric .....	9

## O

Optional.....	10
Organization .....	19, 34, 39
Organization validation message.....	44
Organization100 .....	35
Organization101 .....	35
Organization102 .....	35
Organization103 .....	35
Organization104 .....	35
Organization200 .....	34
Organization201 .....	34
Organization202 .....	34
Organization203 .....	35
Organization204 .....	35

## P

PartNumber .....	16, 31
Performer.....	20
Postal Code.....	26
PostalCode.....	12, 13
PreviousName.....	14, 16
Process Flow .....	7
Processed.....	39
ProductionCompanyName.....	13, 26
ProductionNumber.....	16, 29
ProductionOrigin.....	20
ProductionYear .....	16, 31
Program.....	15, 17, 29
Program AKA validation message.....	43
Program Category.....	16, 51
Program Name.....	15, 30
Program status.....	41
Program validation message .....	43
Program Version .....	18, 53
Program Version Value.....	15
Program100.....	30
Program101.....	30
Program103.....	30
Program104.....	30
Program105.....	30
Program106.....	30
Program107.....	31
Program108.....	31
Program109.....	31
Program110.....	31
Program111.....	31
Program112.....	31
Program113.....	31
Program114.....	31
Program115.....	31
Program116.....	31
Program117.....	31
Program118.....	31
Program119.....	31

Program120.....	31
Program121.....	31
Program122.....	31
Program123.....	32
Program124.....	32
Program200.....	29
Program201.....	29
Program202.....	29
Program203.....	29
Program204.....	30
Program205.....	30
Program206.....	30
Program207.....	30
Program208.....	30
Program209.....	30
Program210.....	30
Program211.....	30
Program212.....	30
ProgramAka.....	17, 32, 39
ProgramAka Name.....	18, 32
ProgramAka Version .....	33
ProgramAka100 .....	32
ProgramAka101 .....	32
ProgramAka102 .....	32
ProgramAka103 .....	32
ProgramAka104 .....	32
ProgramAka105 .....	32
ProgramAka106 .....	33
ProgramAka107 .....	33
ProgramAka200 .....	32
ProgramAka201 .....	32
ProgramAka202 .....	32
ProgramAka203 .....	32
ProgramCategory.....	16, 31
ProgramVersion .....	15, 18, 30, 31
PublicDomainIndicator.....	20, 36, 37, 38
PublicDomainTerritory .....	20, 36

## R

Record reject .....	39
Required.....	10
Role.....	18, 19, 21, 33, 34, 37
role code .....	36
RuntimeDuration.....	16
RunTimeDuration.....	31

## S

Season .....	17
Sender types .....	51
SenderID .....	11, 25
SenderName .....	11, 25
SenderType.....	11, 26
SequenceNumber.....	19, 32, 35
Series .....	14, 27, 39

Series Action .....	27, 28
Series AKA validation message .....	42
Series Category .....	14
Series Name .....	14
Series status .....	41
Series validation message .....	42
Series Version .....	14, 15, 53
Series101 .....	27
Series102 .....	27
Series103 .....	27
Series104 .....	28
Series105 .....	28
Series106 .....	28
Series107 .....	28
Series108 .....	28
Series109 .....	28
Series200 .....	27
Series201 .....	27
Series202 .....	27
Series203 .....	27
Series204 .....	27
Series205 .....	27
Series206 .....	27
SeriesAka .....	15, 28, 39
SeriesAka Action .....	28, 29
SeriesAka Name .....	15, 28
SeriesAka Version .....	29
SeriesAka100 .....	28
SeriesAka101 .....	28
SeriesAka102 .....	28
SeriesAka103 .....	29
SeriesAka104 .....	29
SeriesAka105 .....	29
SeriesAka200 .....	28
SeriesAka201 .....	28
SeriesAka202 .....	28
SeriesAka203 .....	28
SeriesCategory .....	14, 27, 51
SeriesName .....	17, 27, 30, 41
SeriesNumber .....	14
SeriesSubmitterNumber .....	17, 30, 41
SeriesVersion .....	14, 15, 28
sFTP .....	6
shares .....	36
Shares .....	21, 38
ShareScale .....	14
SocialSecurityNumber .....	21, 38
Society .....	51
Society Name .....	22

## Batch Reference Guide

SocietyConfirmed .....	39
SocietyName .....	22, 38
Source .....	42
Status .....	39, 40, 41
Street .....	12, 13
SubmissionSource .....	12
SubmissionVersion .....	12
Submitter .....	39
SubmitterNumber .....	14, 15, 16, 18, 19, 20, 21, 27, 28, 30, 32, 33, 34, 35, 37, 41
SUISA .....	22
SyndicatedNumber .....	16

## T

Telephone .....	12, 13, 25, 26
Time .....	9
TIS numbers .....	46
TISNumber .....	22, 37
TotalMusicDuration .....	16, 31
Town .....	12, 13
TransmissionDate .....	12, 25
TransmissionProtocol .....	12
TransmissionTime .....	12, 26

## V

Valid characters .....	53
Validation message format .....	42
Validation rules .....	24
Value .....	42
VersionNumber .....	11, 25
Village .....	12, 13

## W

Warning .....	39
Warning/Error Number .....	42
WarningsExist .....	39
Website .....	13, 14, 26

## X

XML schema .....	6
XML Schema .....	11, 57
XSD .....	6, 11, 24, 57
XSDReject .....	24, 25, 26, 27, 29